

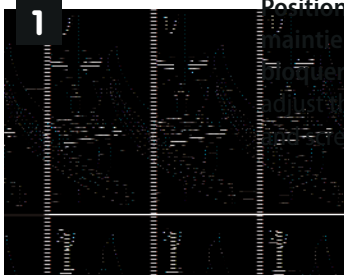
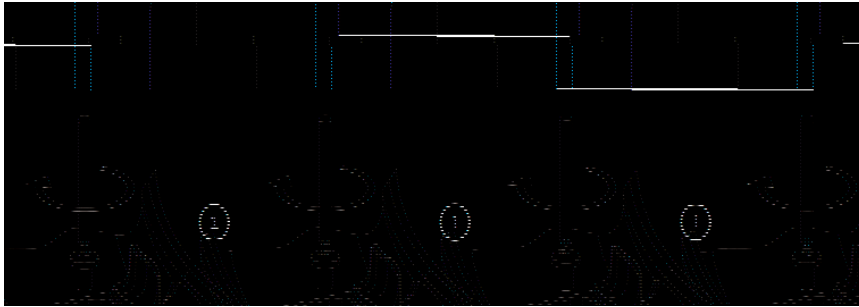
# SÉLECTIONNER LES CALES DE MAINTIEN APPROPRIÉES SELON LE TYPE DE CUVETTE

CHOOSE THE SUITABLE BLOCKED BUFFERS ACCORDING TO THE TYPE OF BOWL



STANDARD

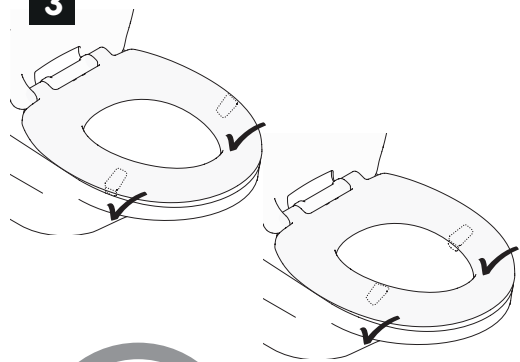
SANS BRIDE / RIMLESS



1

Positionner la cale de maintien et visser pour bloquer la cale / Place and adjust the blocked buffer to block it

3



2

Clipser le cache sur la cale / Clip the cover on the blocked buffer

