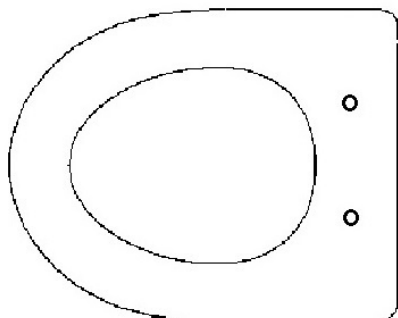
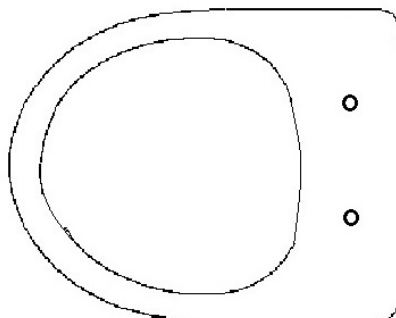
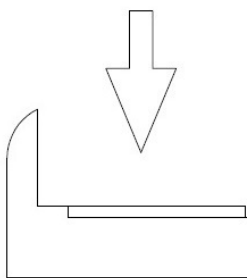


SÉLECTIONNER LES CALES DE MAINTIEN APPROPRIÉES SELON LE TYPE DE CUVETTE

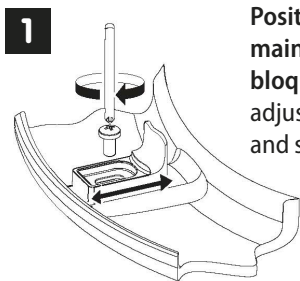
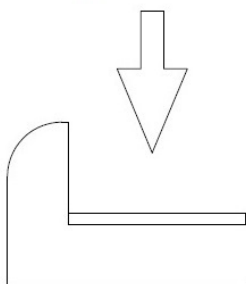
CHOOSE THE SUITABLE BLOCKED BUFFERS ACCORDING TO THE TYPE OF BOWL



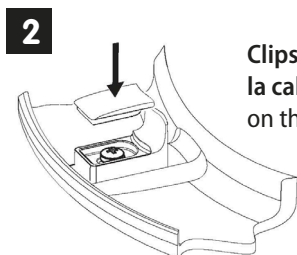
STANDARD



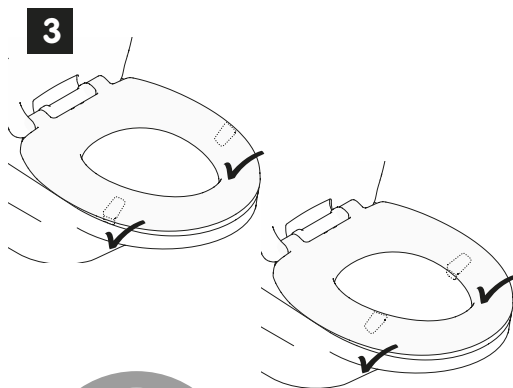
SANS BRIDE / RIMLESS



Positionner la cale de maintien et visser pour bloquer la cale / Place and adjust the blocked buffer and screw to block it

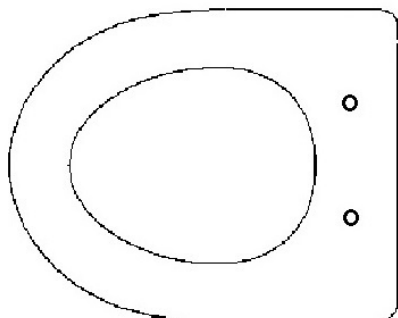


Clipser le cache sur la cale / Clip the cover on the blocked buffer

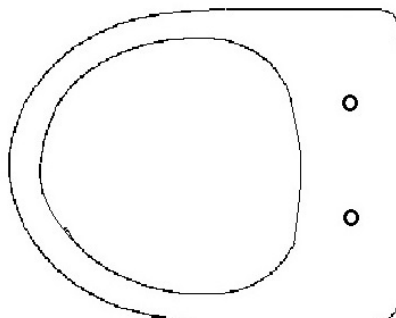
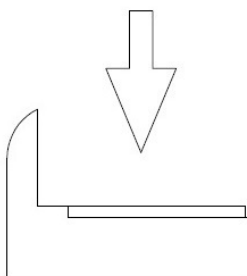


SÉLECTIONNER LES CALES DE MAINTIEN APPROPRIÉES SELON LE TYPE DE CUVETTE

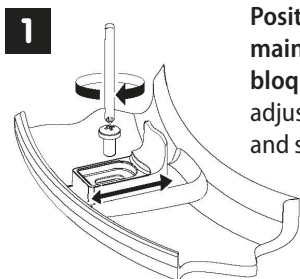
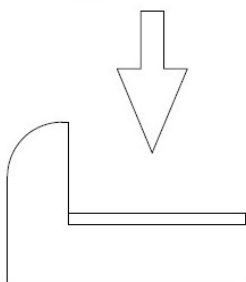
CHOOSE THE SUITABLE BLOCKED BUFFERS ACCORDING TO THE TYPE OF BOWL



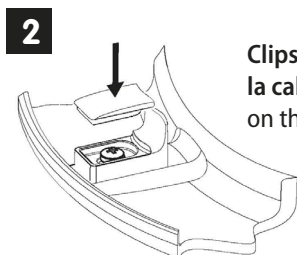
STANDARD



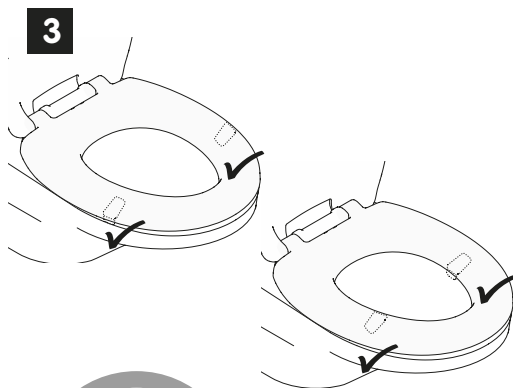
SANS BRIDE / RIMLESS



Positionner la cale de maintien et visser pour bloquer la cale / Place and adjust the blocked buffer and screw to block it

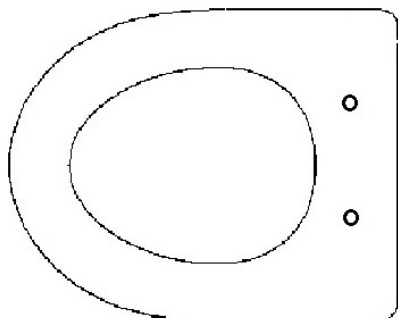


Clipser le cache sur la cale / Clip the cover on the blocked buffer

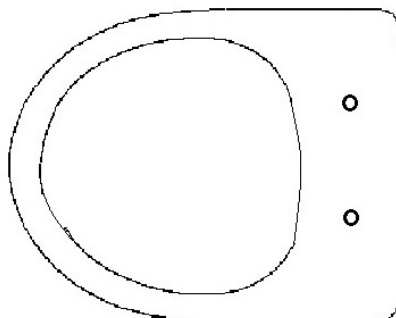
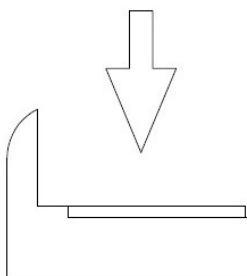


SÉLECTIONNER LES CALES DE MAINTIEN APPROPRIÉES SELON LE TYPE DE CUVETTE

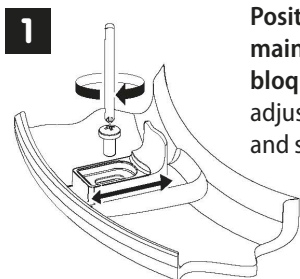
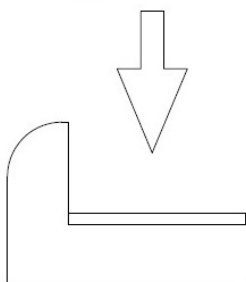
CHOOSE THE SUITABLE BLOCKED BUFFERS ACCORDING TO THE TYPE OF BOWL



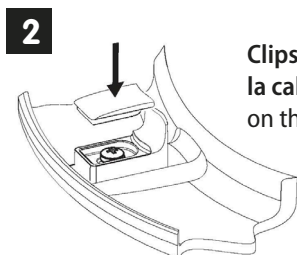
STANDARD



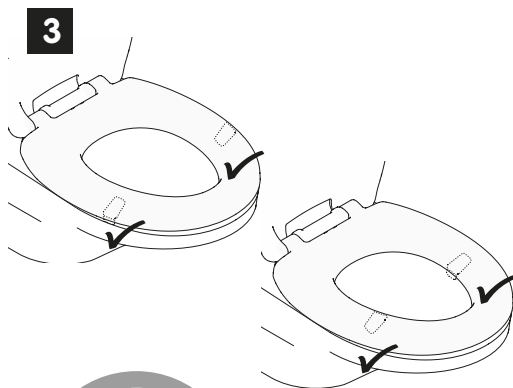
SANS BRIDE / RIMLESS



Positionner la cale de maintien et visser pour bloquer la cale / Place and adjust the blocked buffer and screw to block it

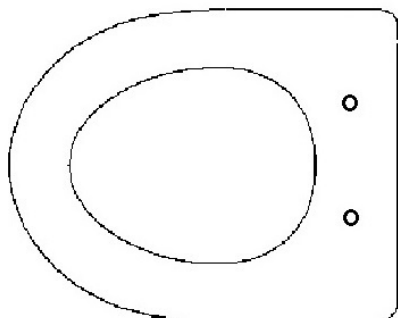


Clipser le cache sur la cale / Clip the cover on the blocked buffer

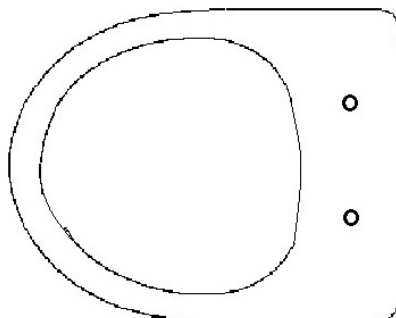
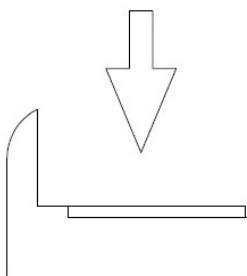


SÉLECTIONNER LES CALES DE MAINTIEN APPROPRIÉES SELON LE TYPE DE CUVETTE

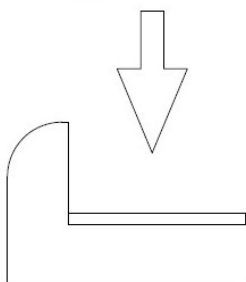
CHOOSE THE SUITABLE BLOCKED BUFFERS ACCORDING TO THE TYPE OF BOWL



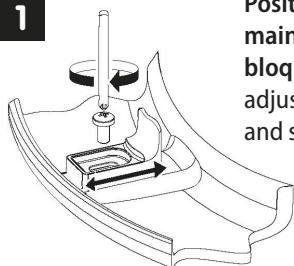
STANDARD



SANS BRIDE / RIMLESS

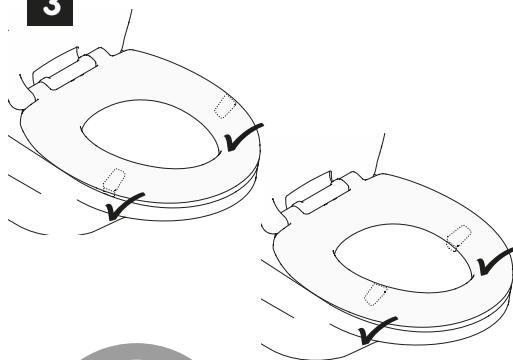


1

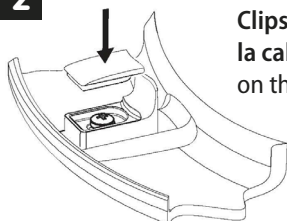


Positionner la cale de maintien et visser pour bloquer la cale / Place and adjust the blocked buffer and screw to block it

3



2



Clipser le cache sur la cale / Clip the cover on the blocked buffer