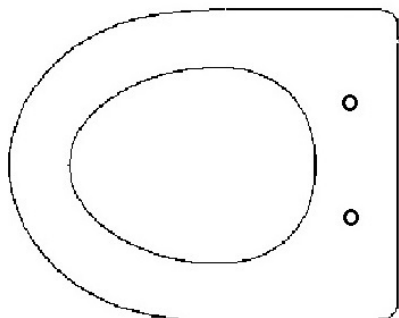
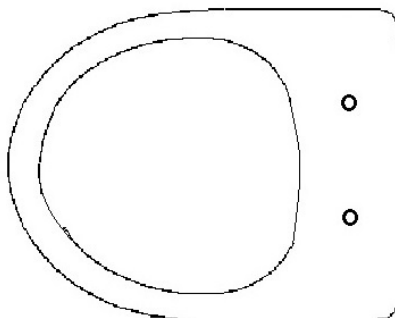
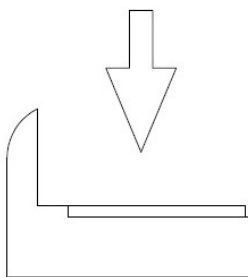


SÉLECTIONNER LES CALES DE MAINTIEN APPROPRIÉES SELON LE TYPE DE CUVETTE

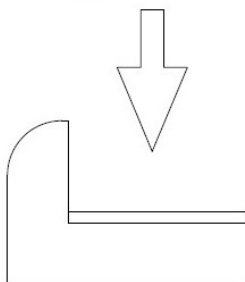
CHOOSE THE SUITABLE BLOCKED BUFFERS ACCORDING TO THE TYPE OF BOWL



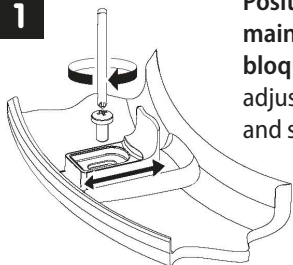
STANDARD



SANS BRIDE / RIMLESS

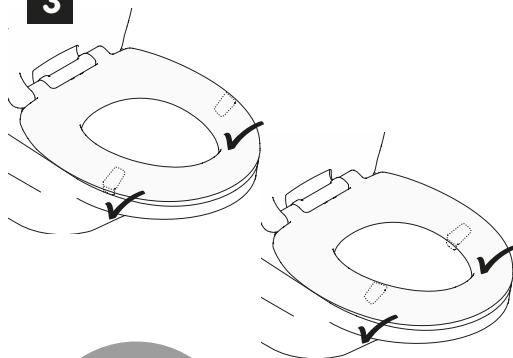


1

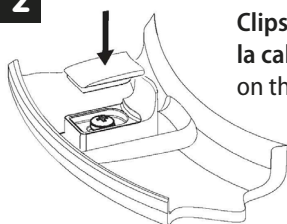


Positionner la cale de maintien et visser pour bloquer la cale / Place and adjust the blocked buffer and screw to block it

3



2



Clipser le cache sur la cale / Clip the cover on the blocked buffer

