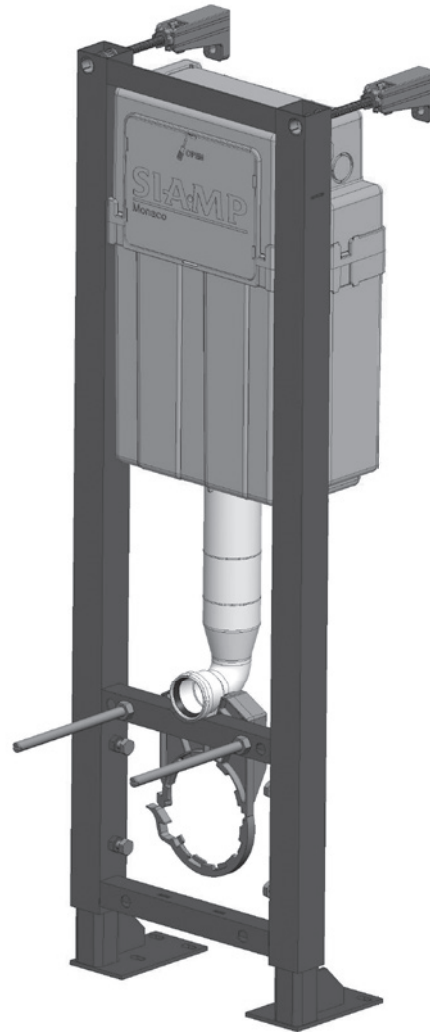


# INGENIO

# SIAMP

Monaco

Bâti-support WC / *WC support frame*  
**100% AUTOPORTANT/APPLIQUE**  
*/ SELF SUPPORTING FRAME*



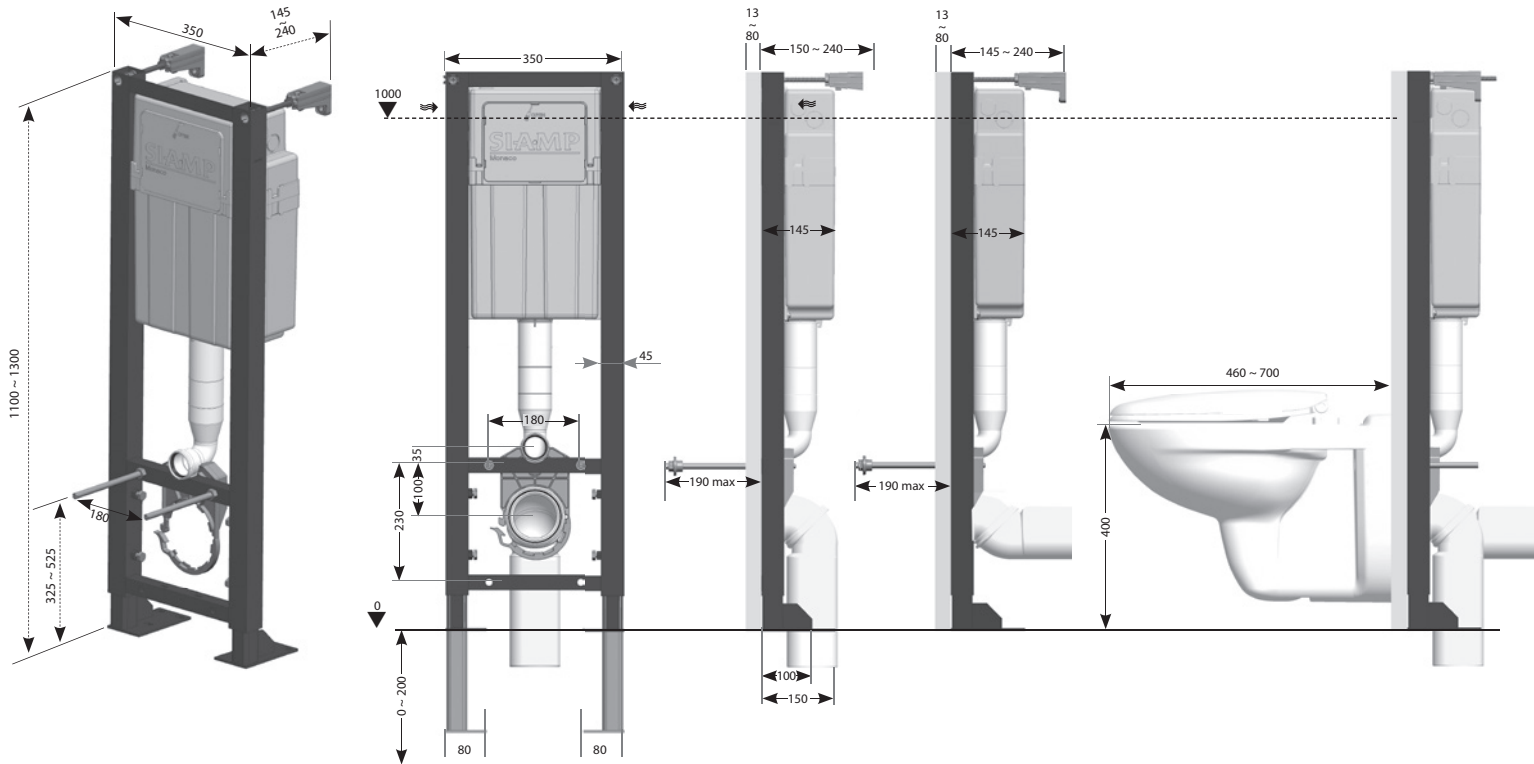
[www.siamp.com](http://www.siamp.com)

# CE

EN 14055  
Type 2

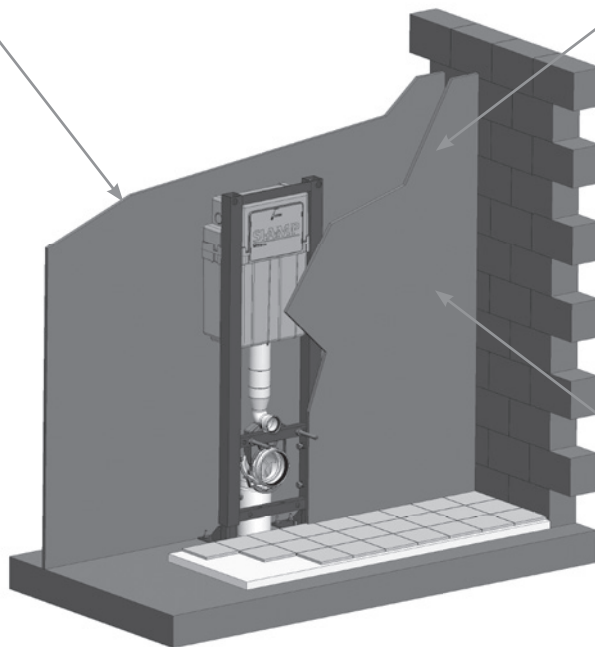
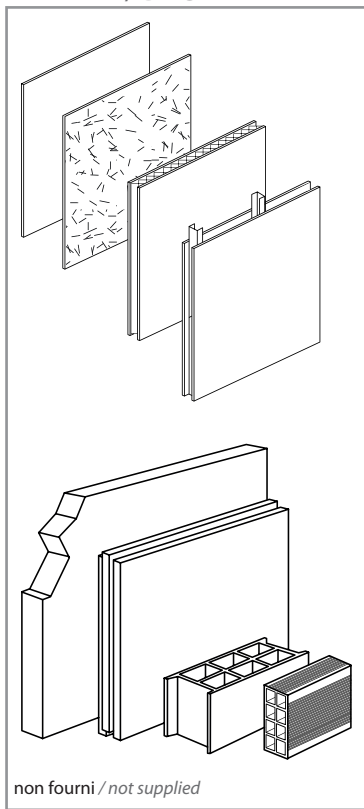


# DIMENSIONS (mm)

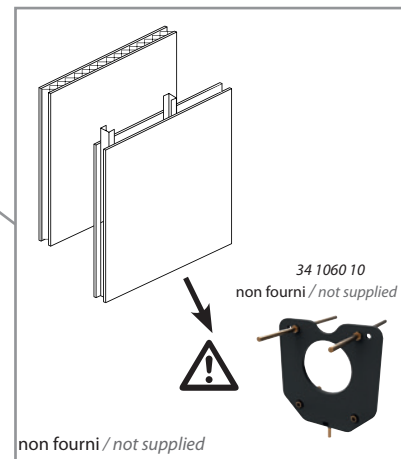
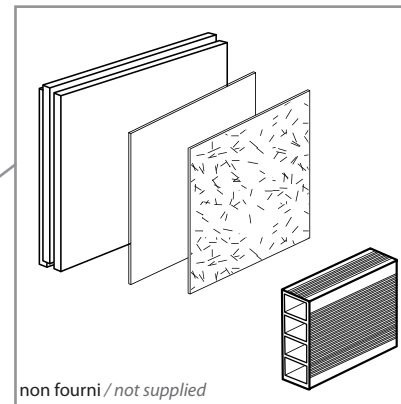


# PAROIS / CLADDING

ARRIÈRE / BACK

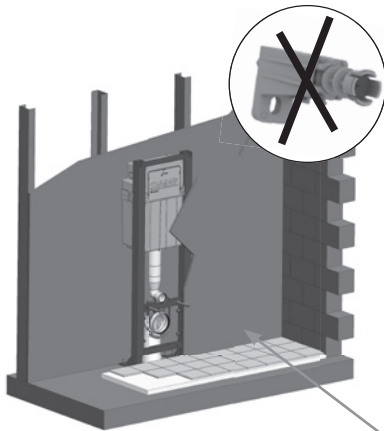
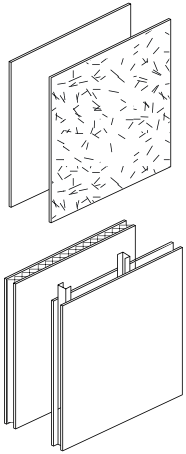


AVANT / FRONT

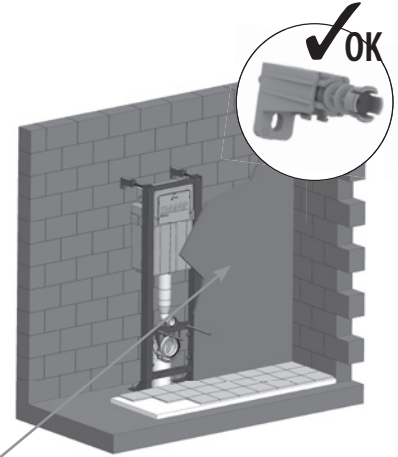
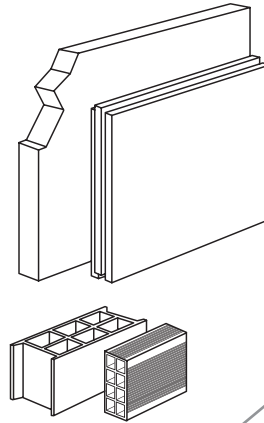


# CAS DE POSE / INSTALLATION CONFIGURATIONS

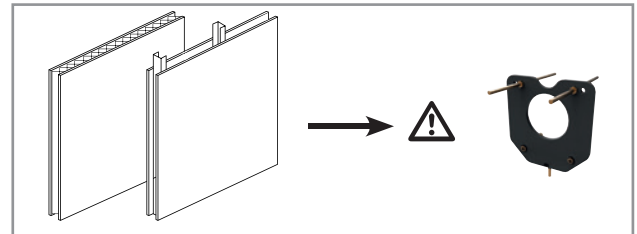
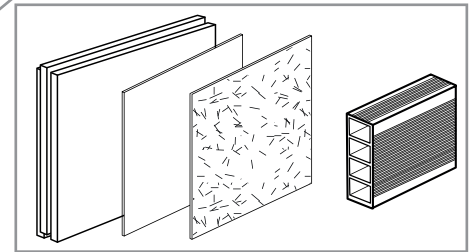
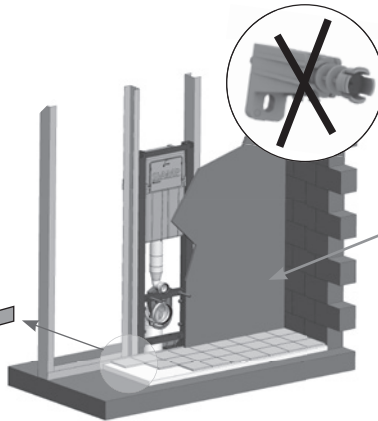
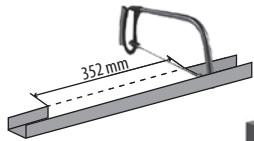
**A**

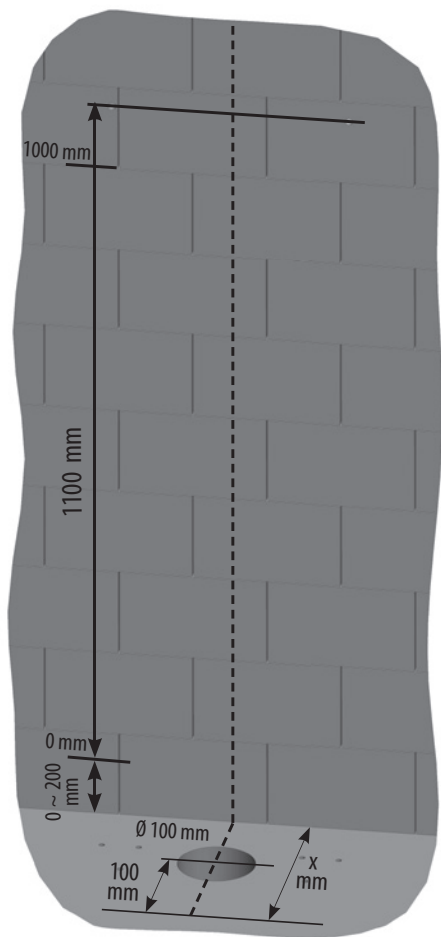


**C**

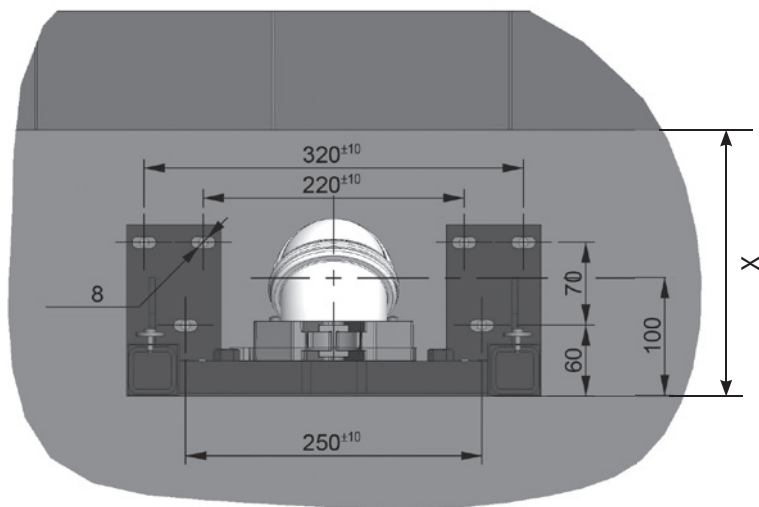


**B**



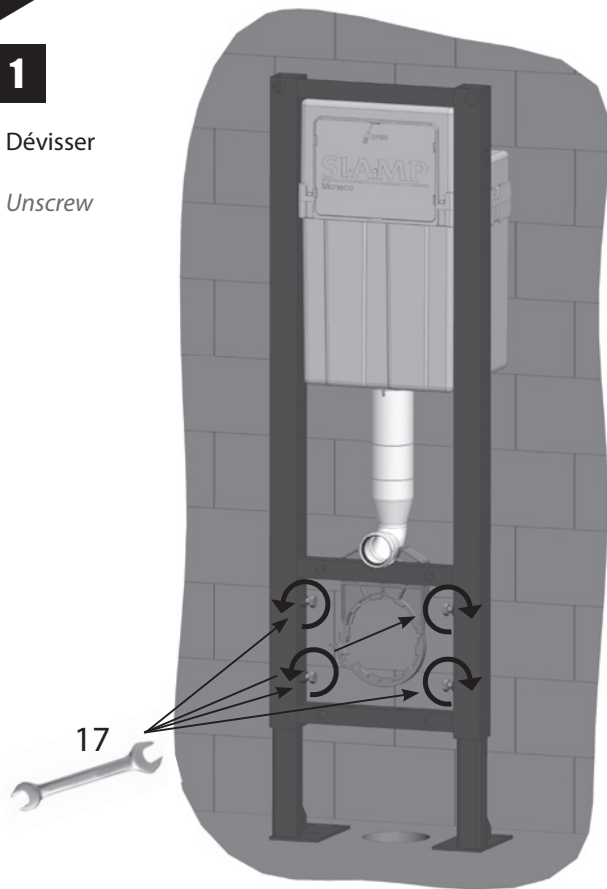
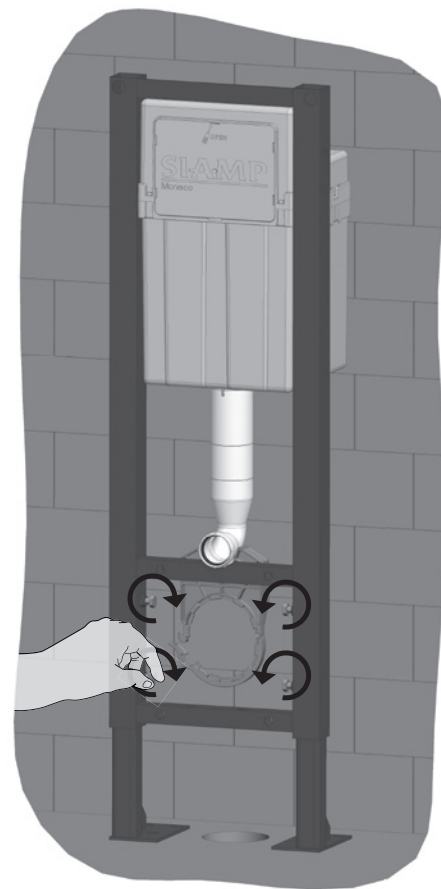


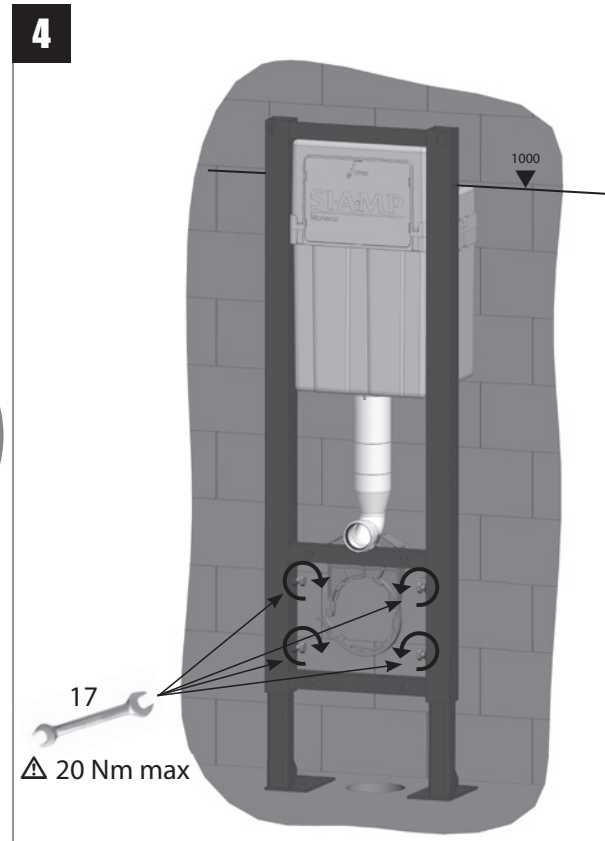
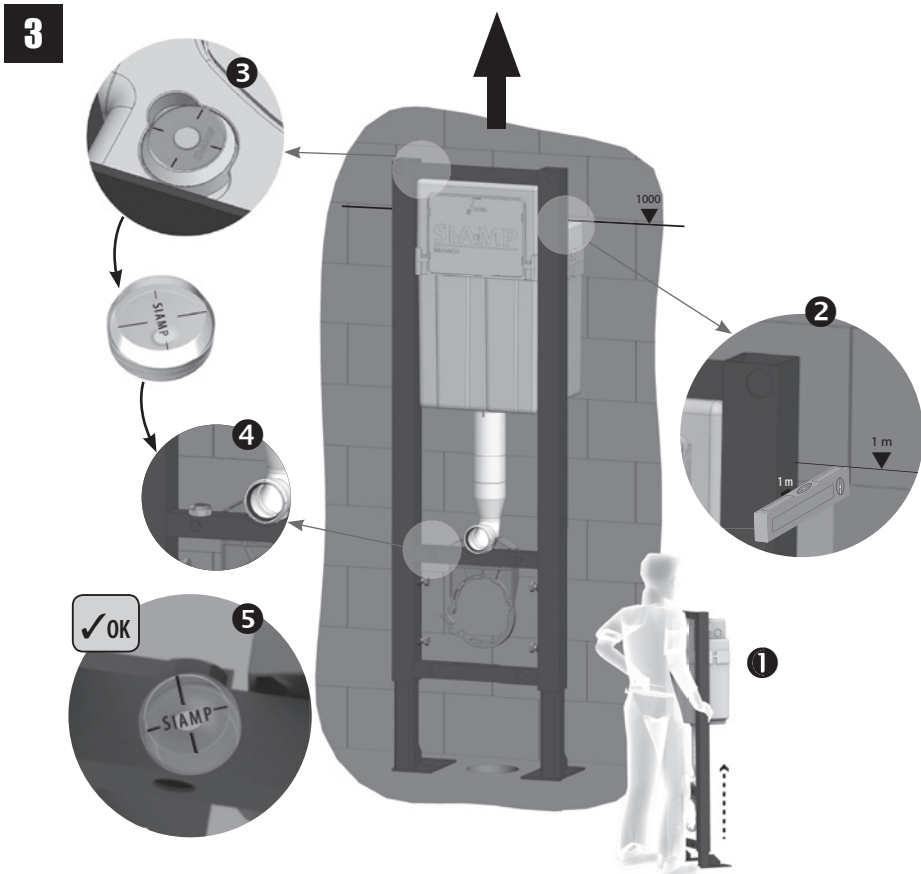
Vue de dessus



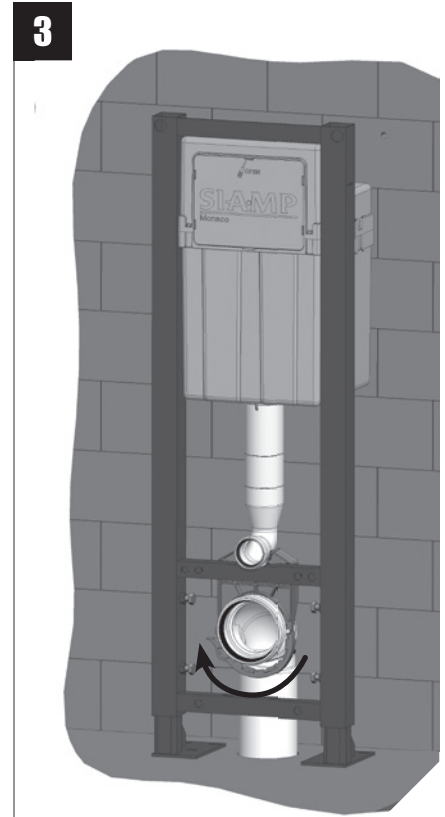
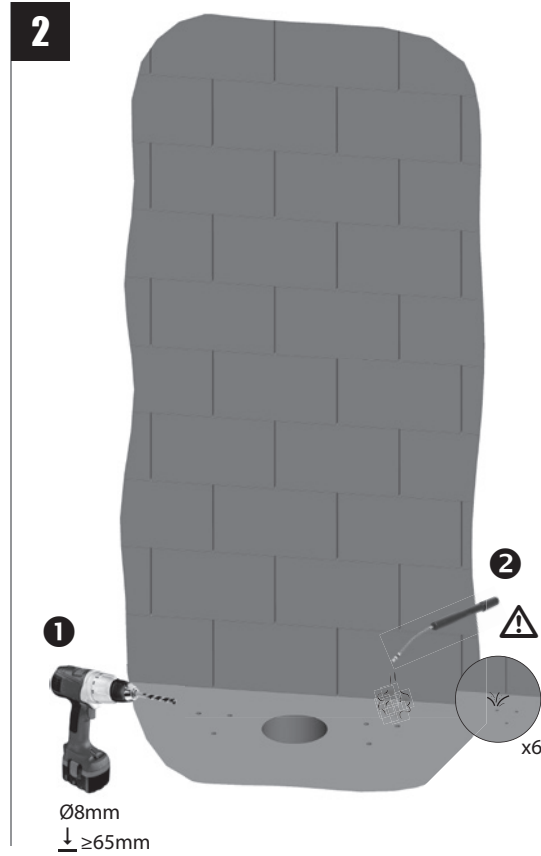
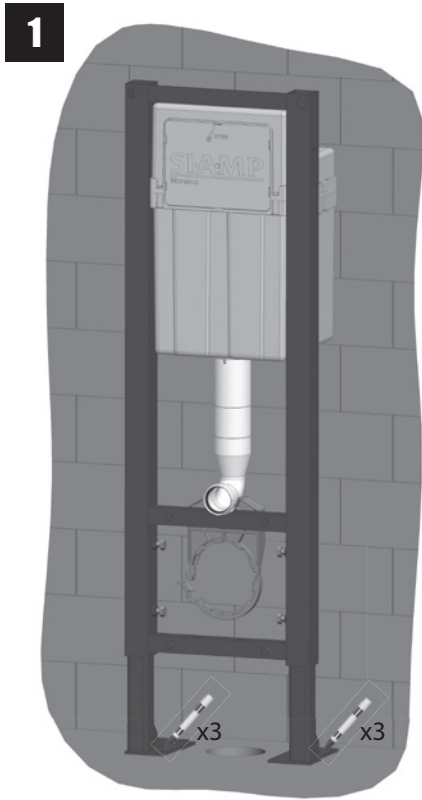
**1**

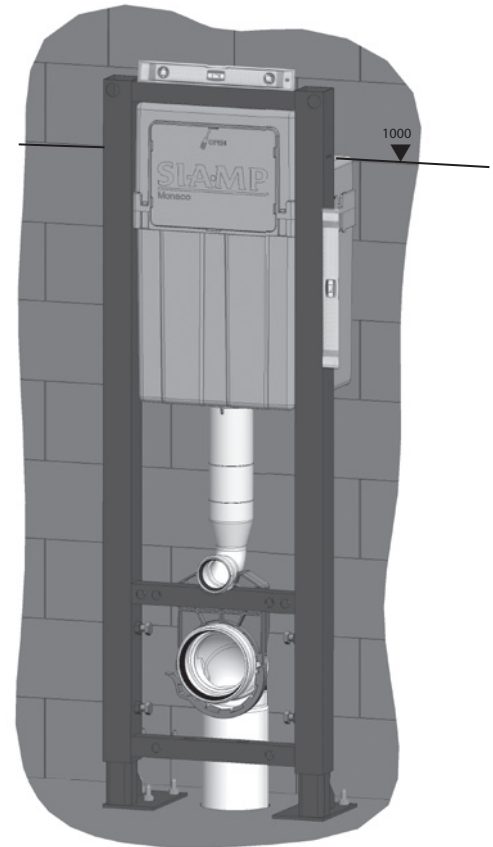
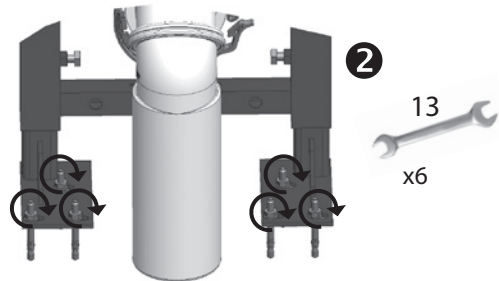
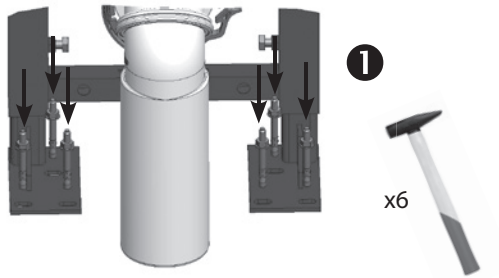
Dévisser

*Unscrew***2**Visser à la  
main jusqu'à  
ce que les vis  
opposent une  
résistance*Hand tighten*





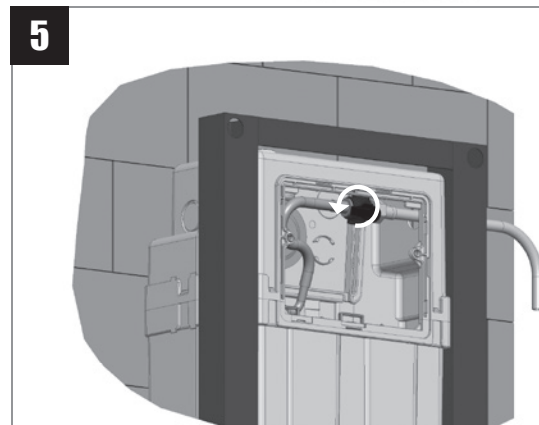
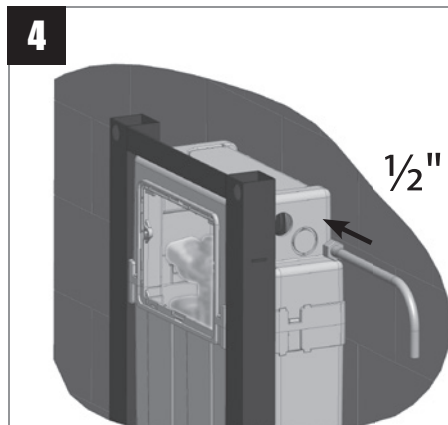
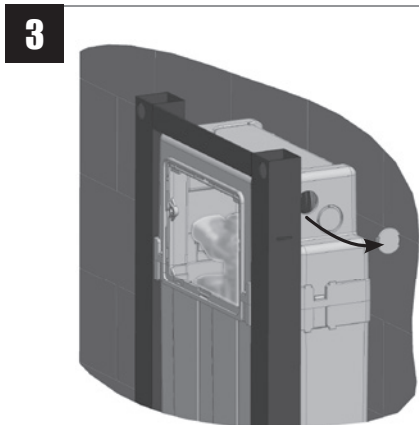
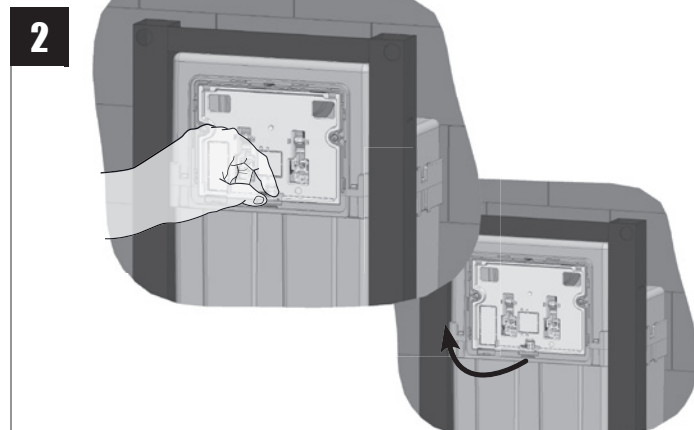
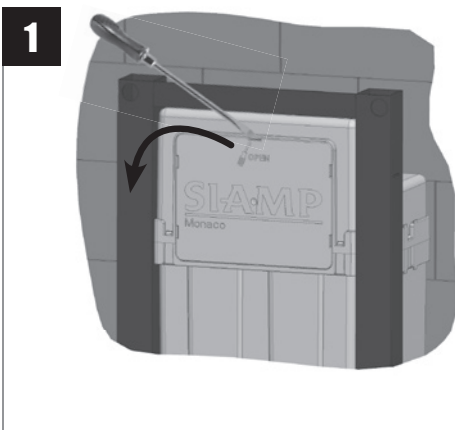
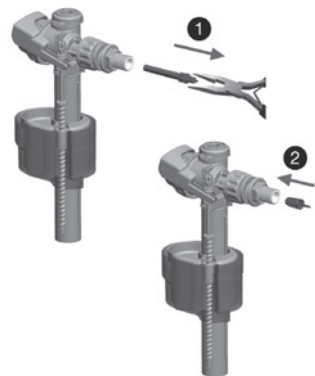




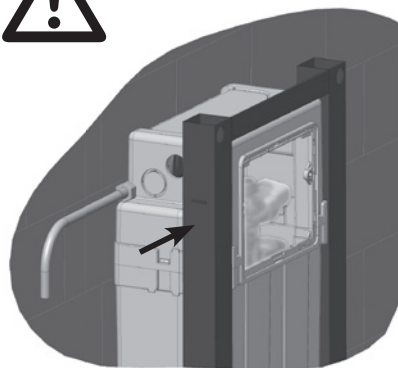
# CONNEXION EN EAU (à droite) / WATER CONNECTION (to the right)



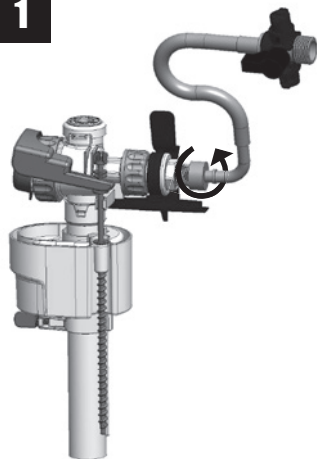
Pression / Pressure  
< 1 bar



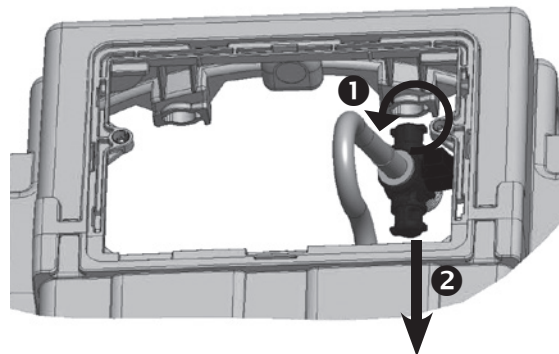
# CONNEXION EN EAU (à gauche) / WATER CONNECTION (to the left)



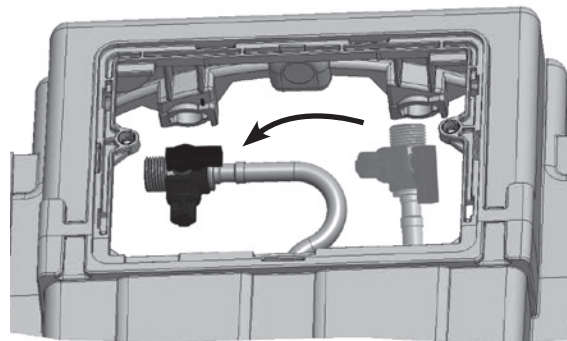
**1**



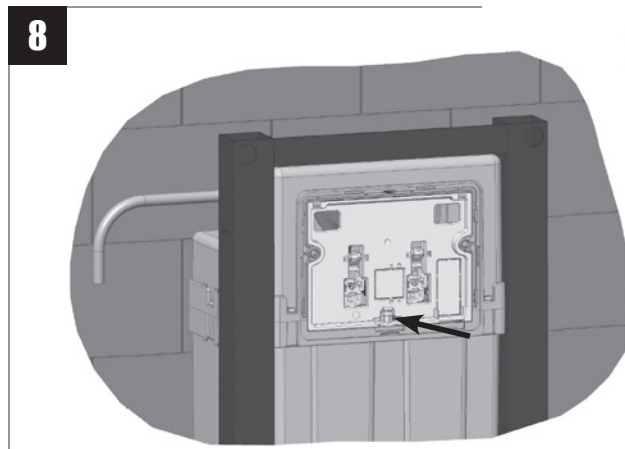
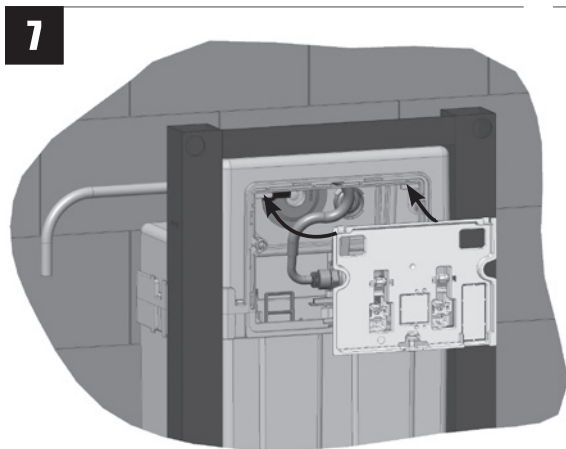
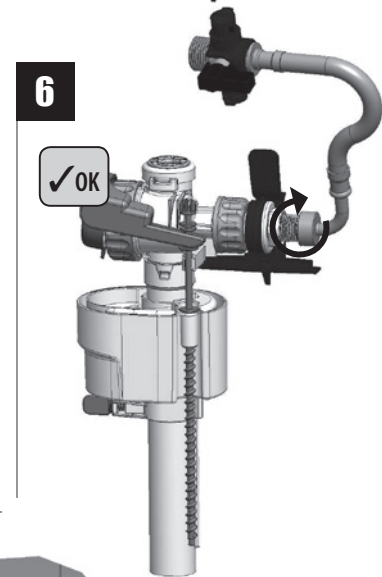
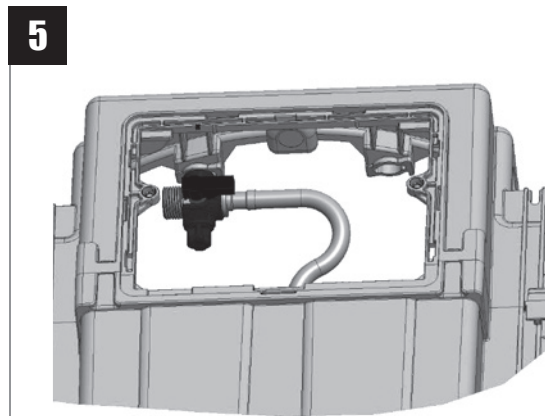
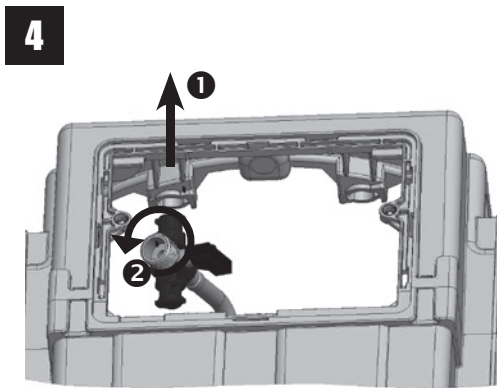
**2**



**3**

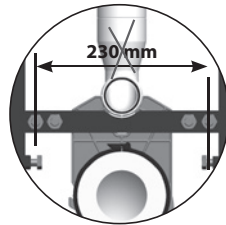
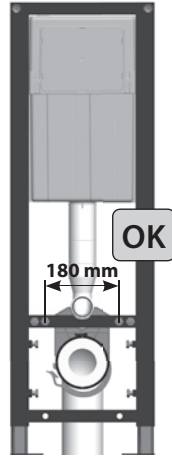
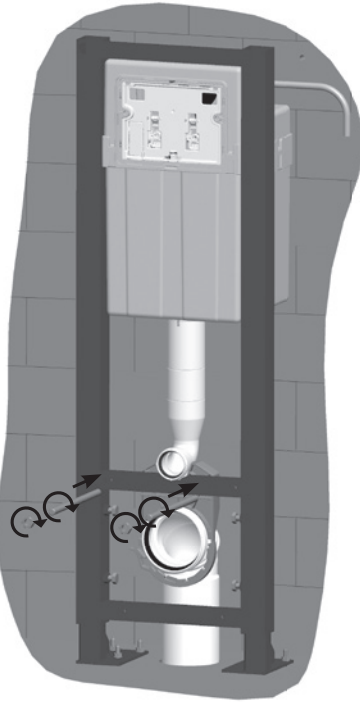


# CONNEXION EN EAU (à gauche) / WATER CONNECTION (to the left)

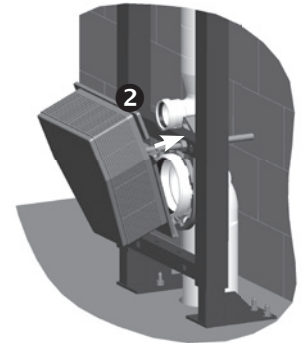
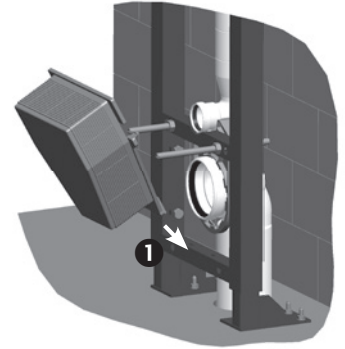
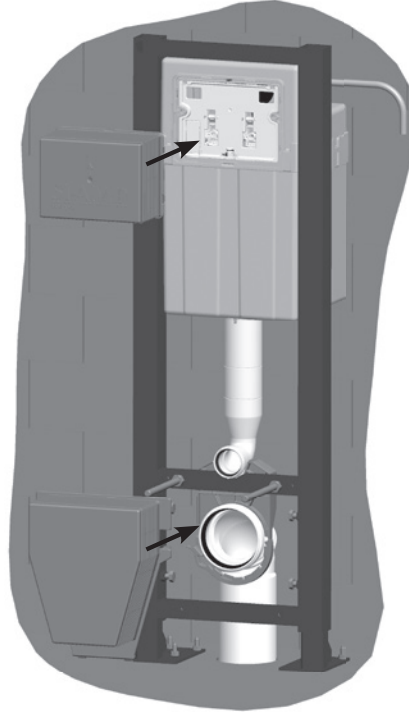


# PRÉPARATION DE L'HABILLAGE / CLADDING PREPARATION

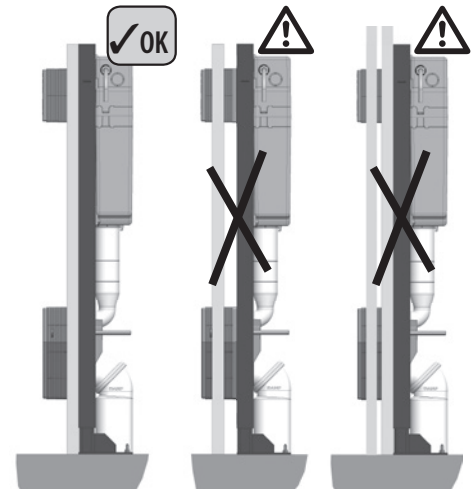
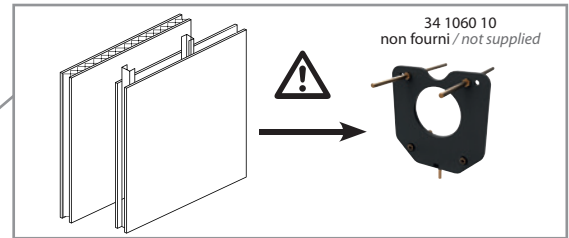
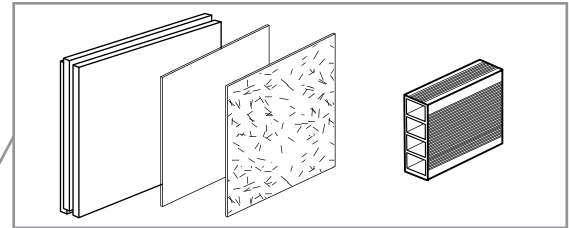
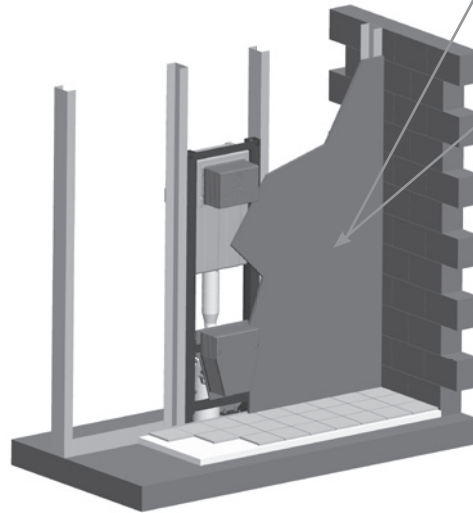
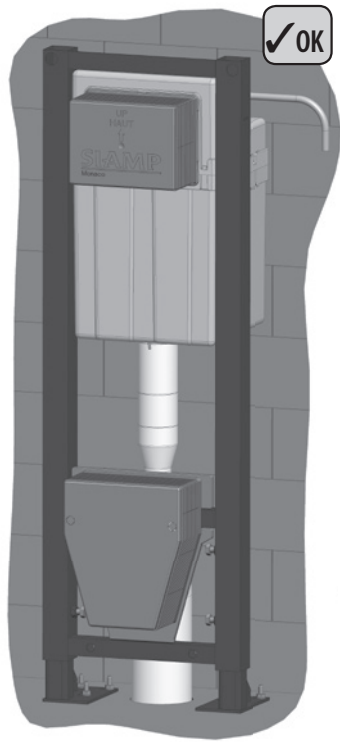
1

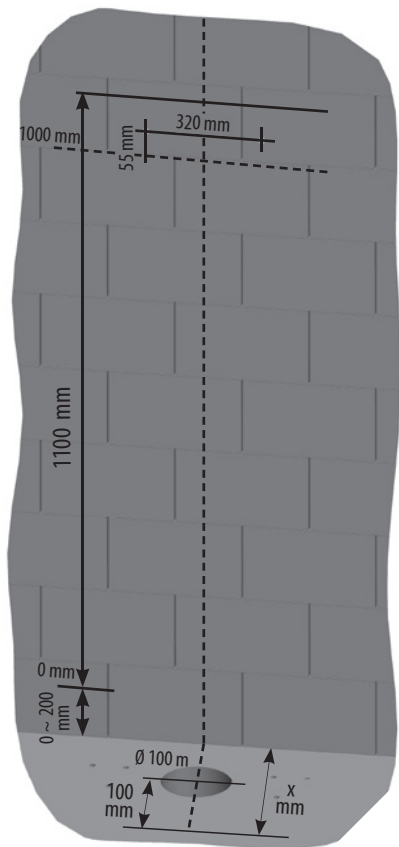


2

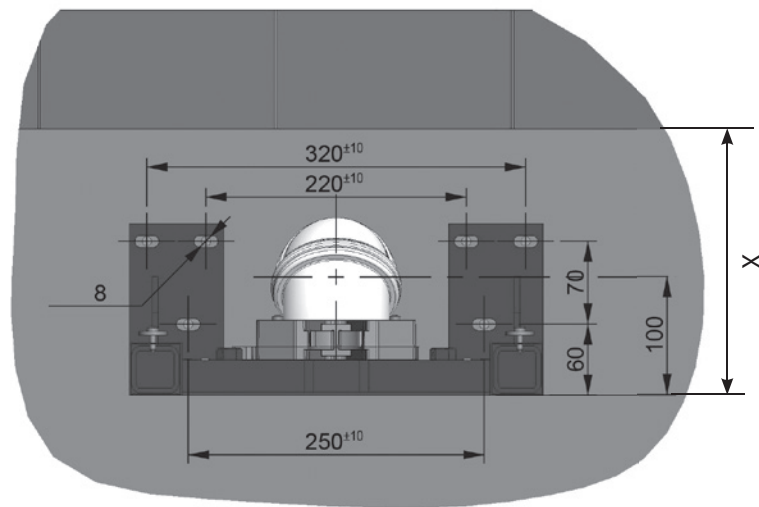


# PRÉPARATION DE L'HABILLAGE / CLADDING PREPARATION

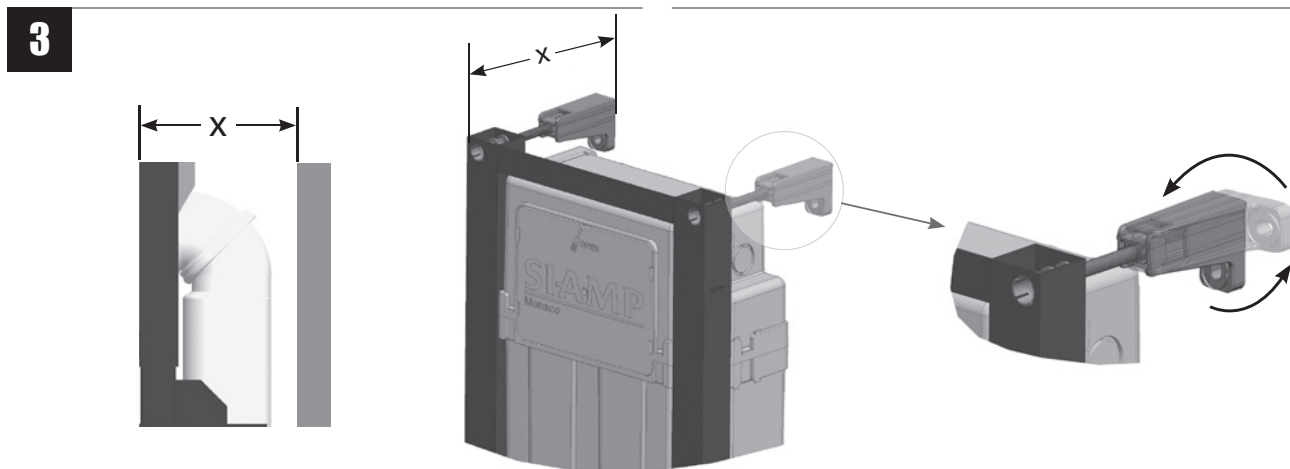
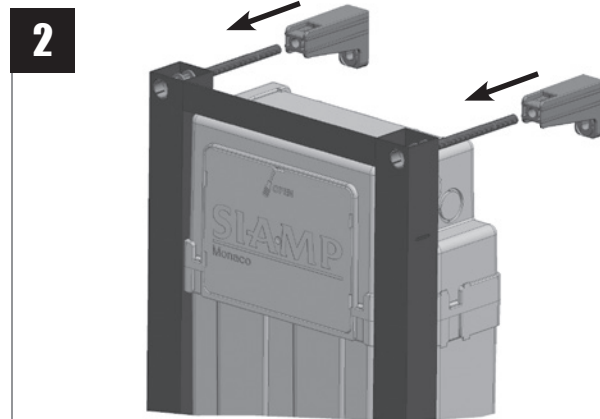
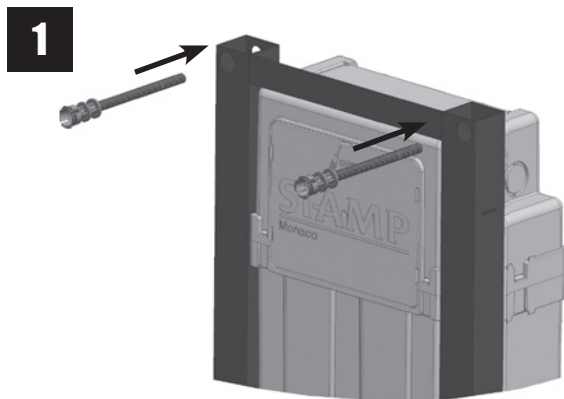




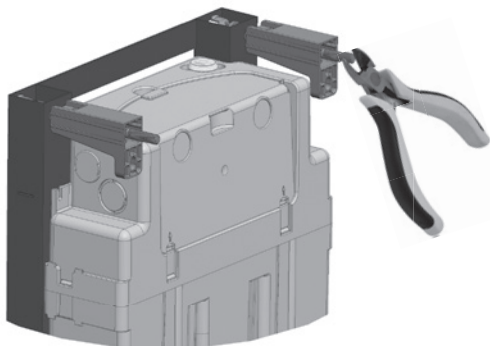
Vue de dessus



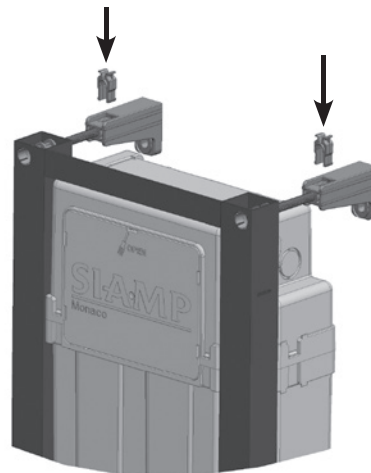




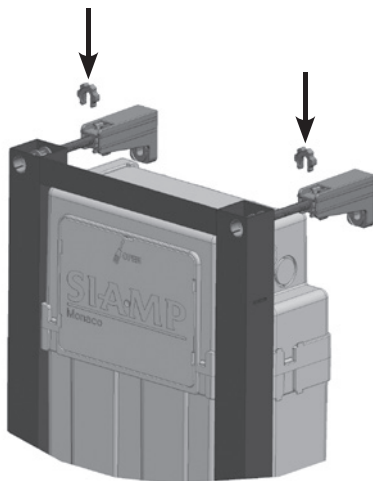
4

si  $x \leq 180$  mm

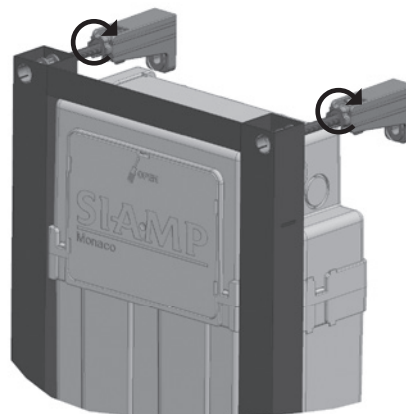
5



6

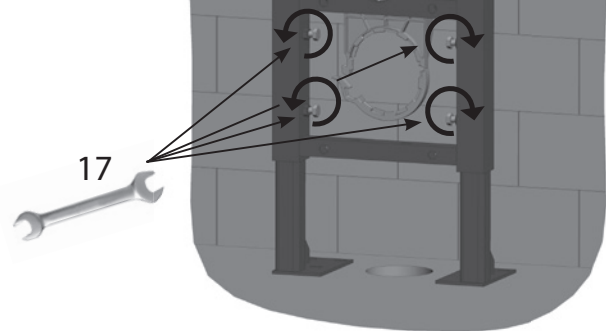
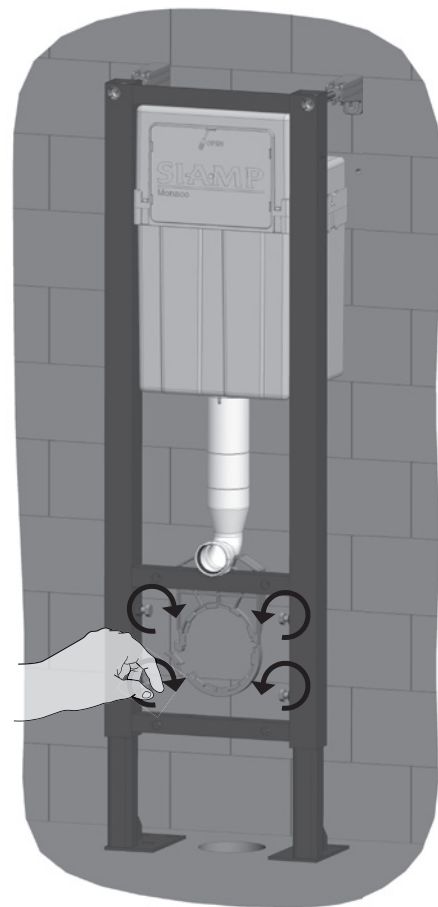


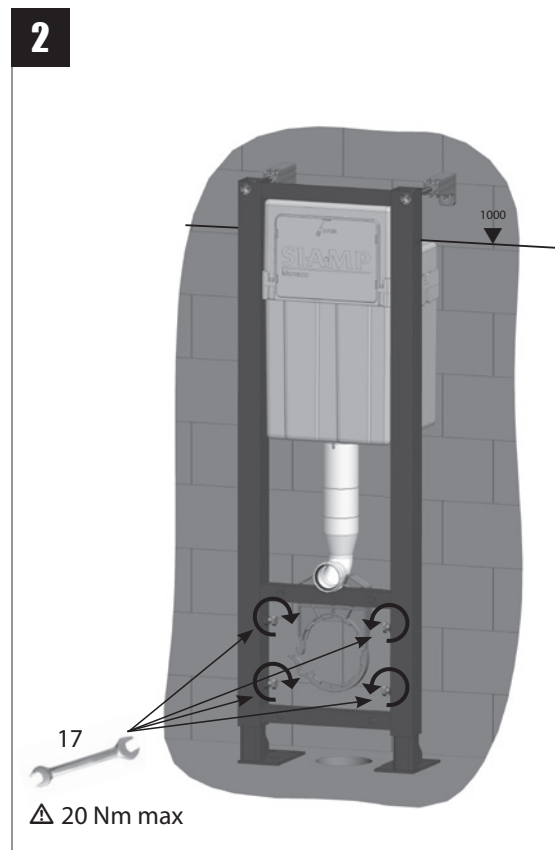
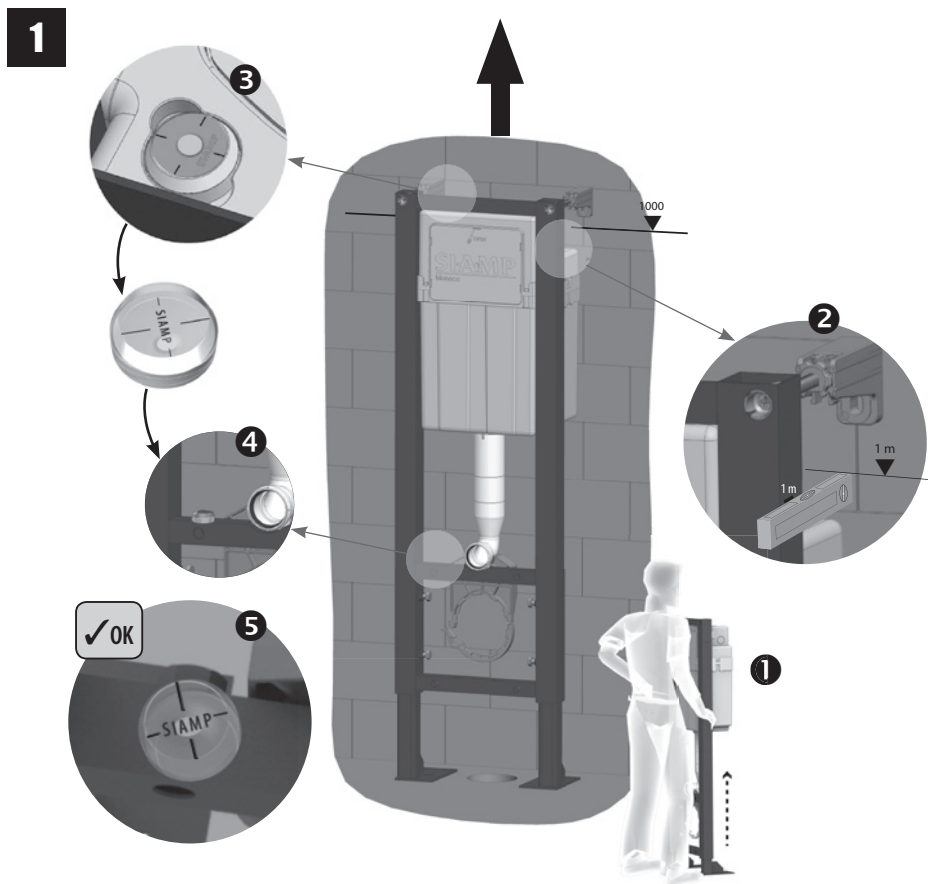
7

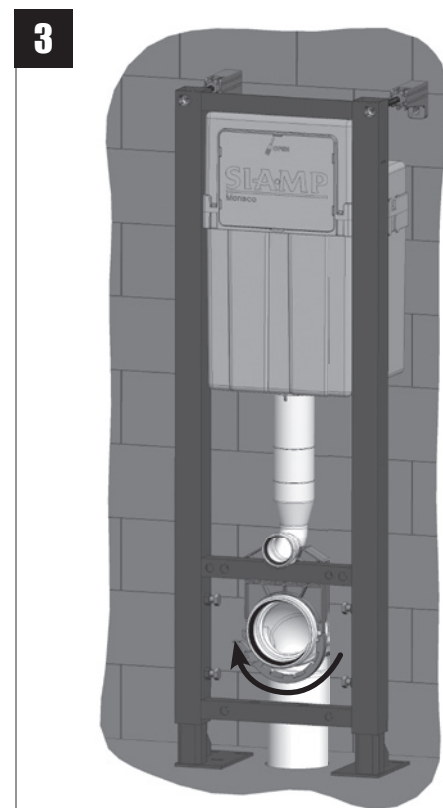
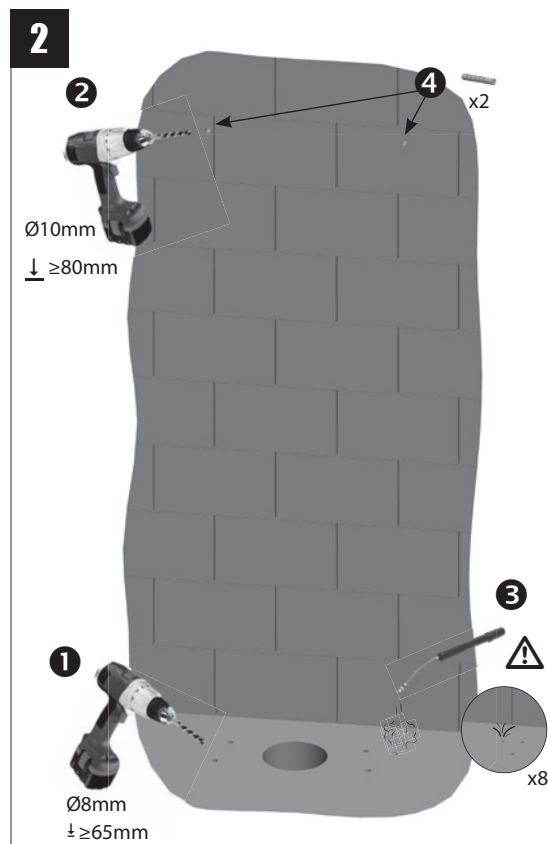
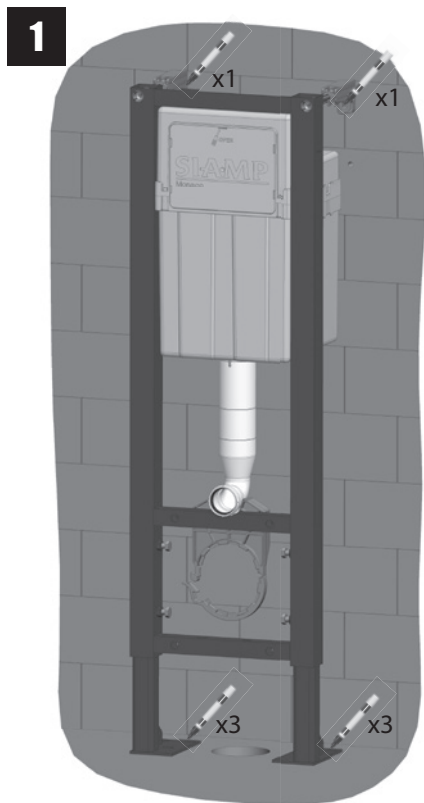


**1**

Dévisser

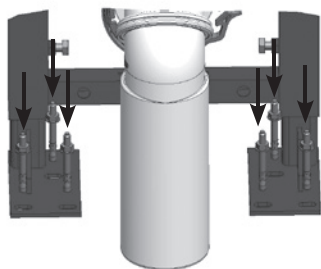
*Unscrew***2**Visser à la  
main jusqu'à  
ce que les vis  
opposent une  
résistance*Hand tighten*





C

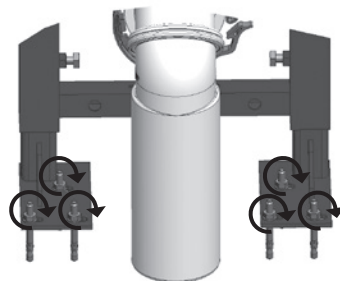
# FIXATION (Liaison murale haute optionnelle) / FIXATION TOP WALL FIXATION (Optional)



1



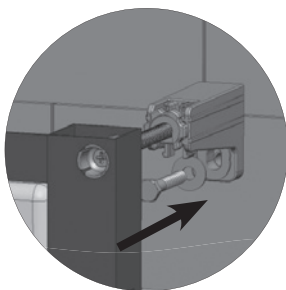
x6



2



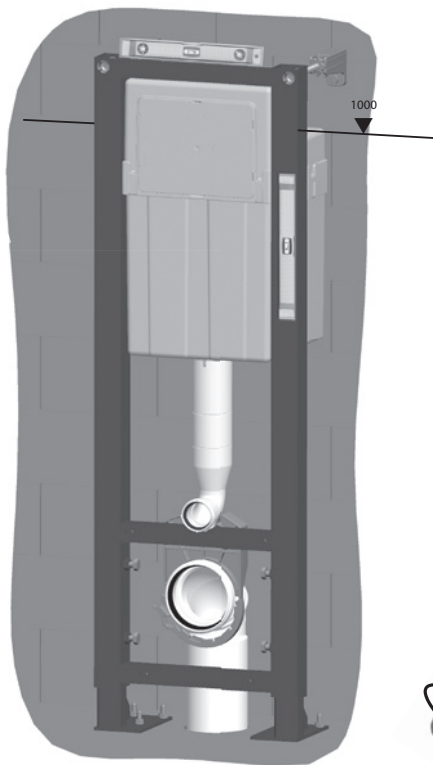
x6



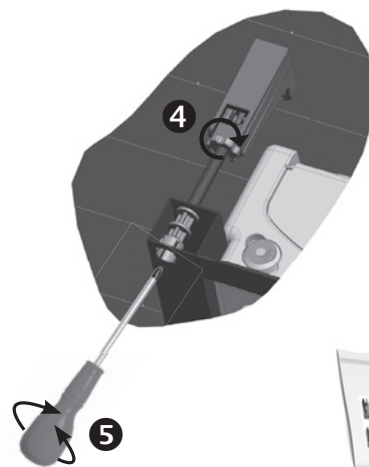
3



x2



1000



4

5



➔ P. 10





**SIAMP**

Monaco



10 0052 23



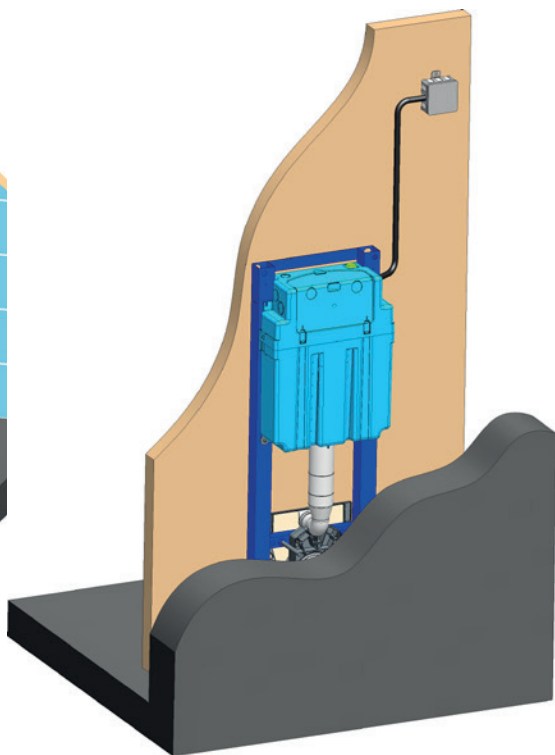
# SIAMP

Monaco

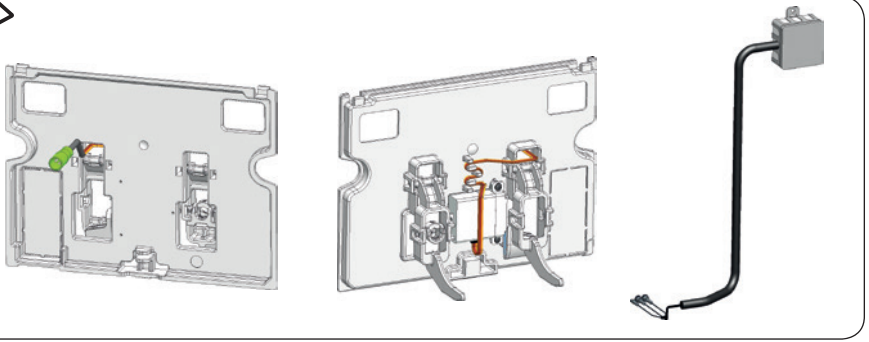
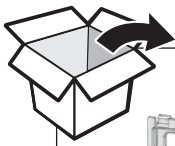
## INGENIO

### PLAQUE DE COMMANDE ELECTRONIQUE

AUTOMATIC FLUSH PLATE

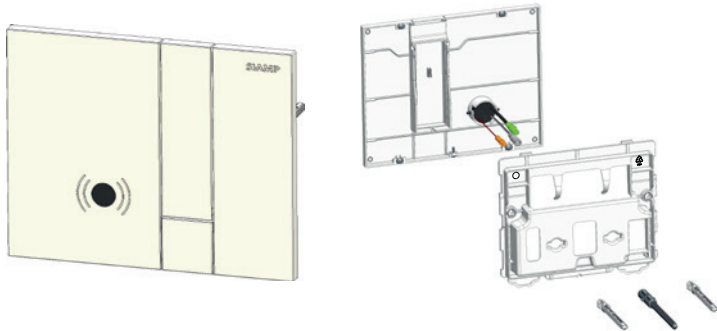


NOTICE D'INSTALLATION  
INSTALLATION INSTRUCTION



### 3 VERSIONS

**VERSION A**

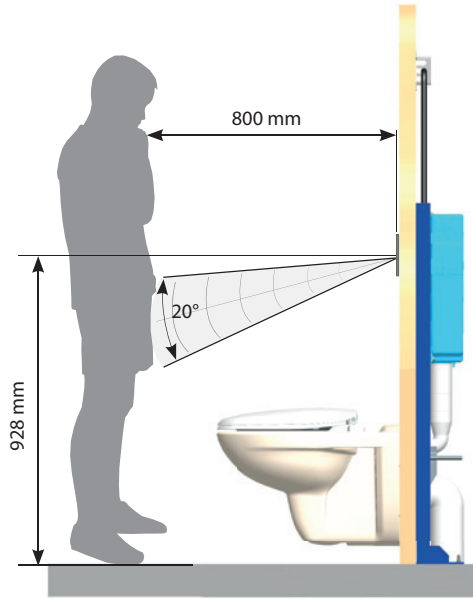


**VERSION B**

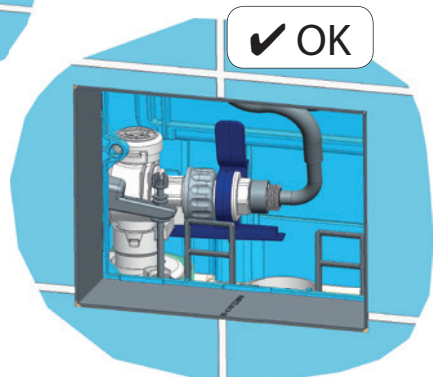
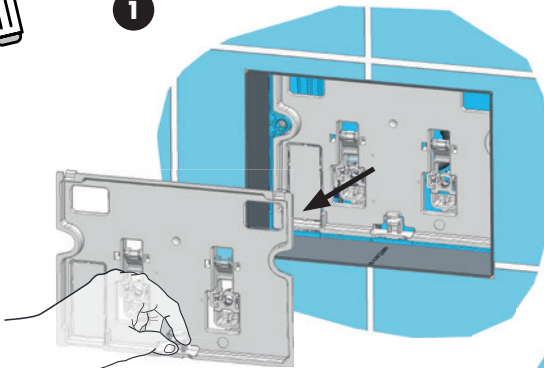


**VERSION C**





1



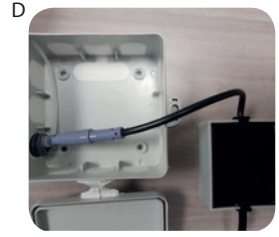
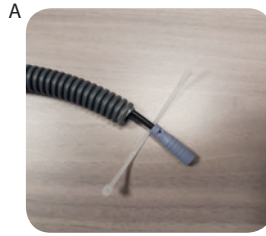
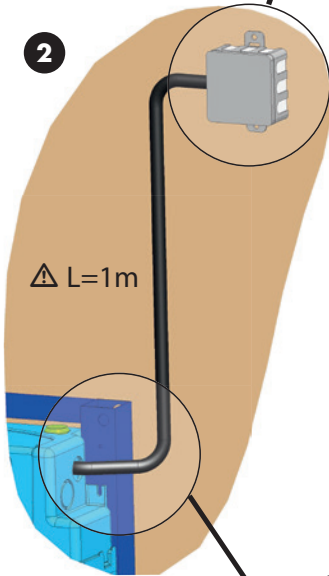


OFF

STEP 1

2

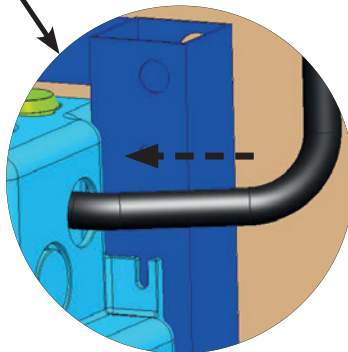
△ L=1m



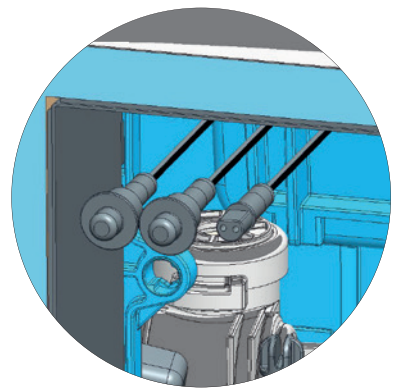
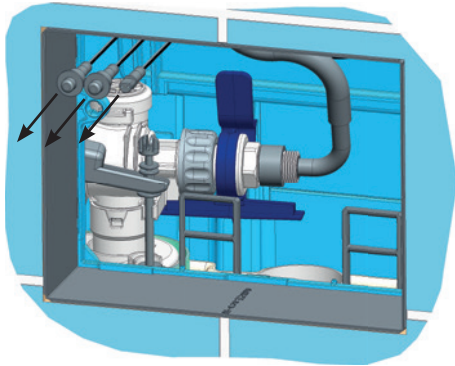
90 VAC / 264 VAC  
50Hz / 60Hz



Respecter la réglementation d'installation électrique locale.  
Follow the local electrical installation rules.

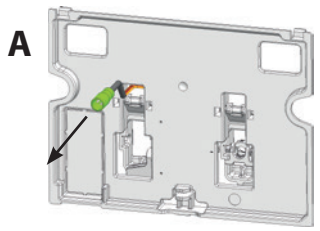


3

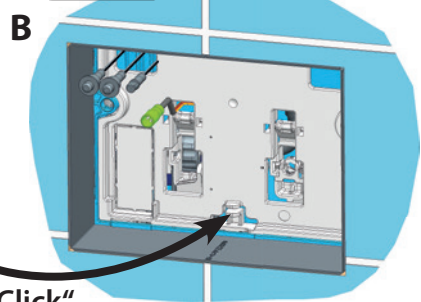


STEP 1

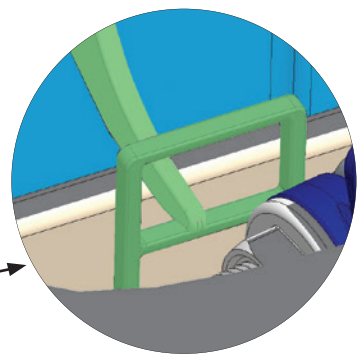
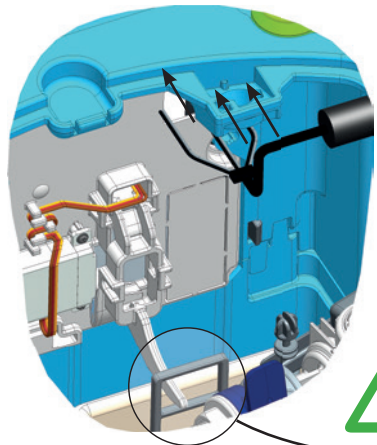
4



✓ OK

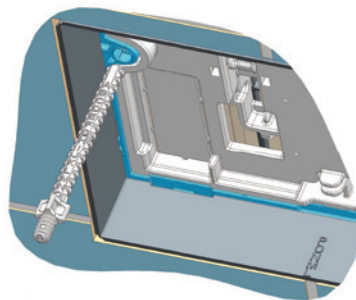
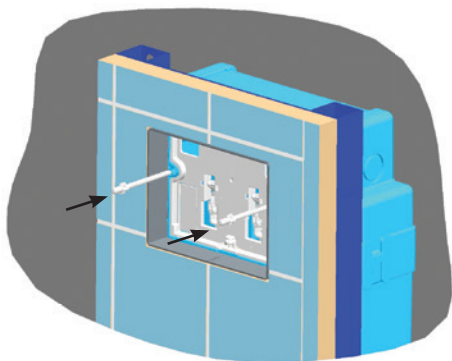


STEP 2

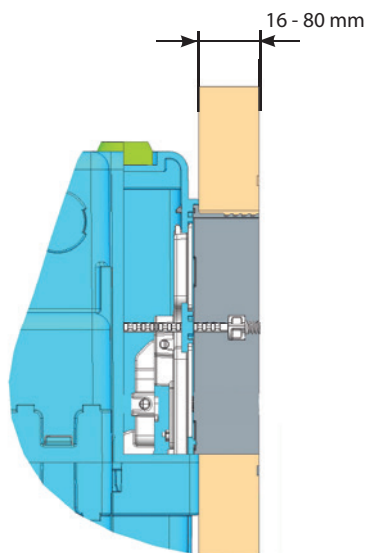
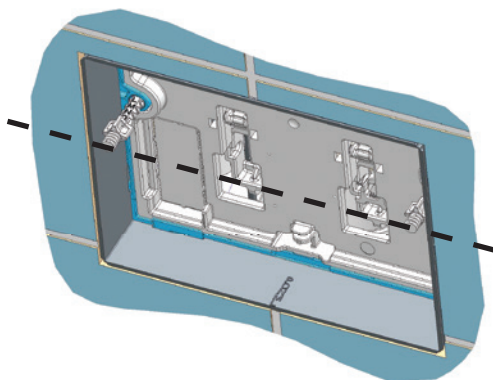


# VERSION A

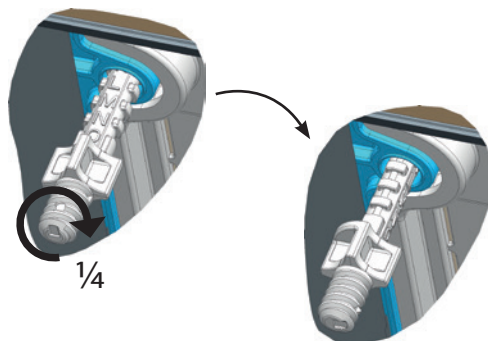
1



2



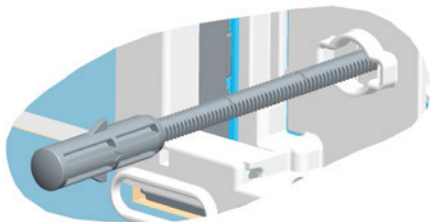
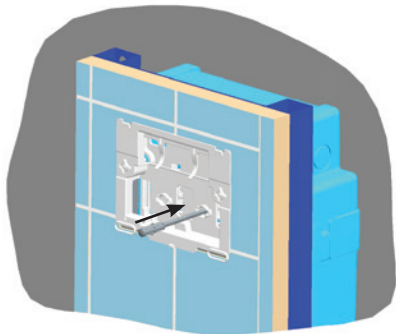
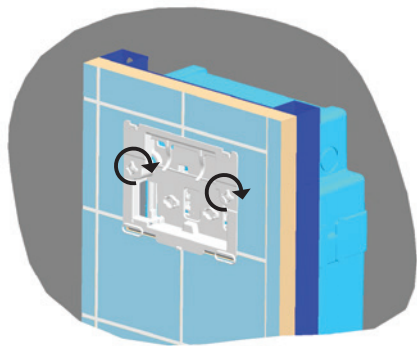
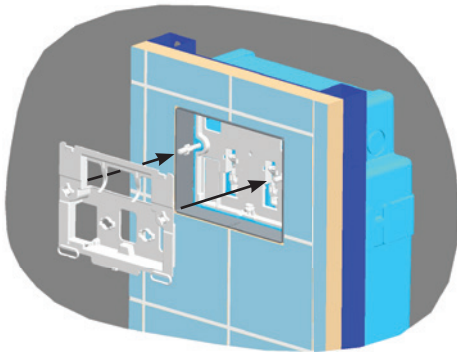
3



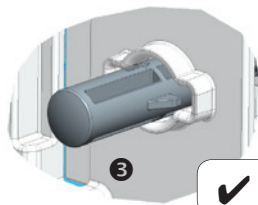
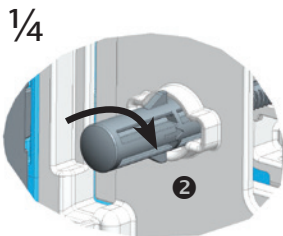
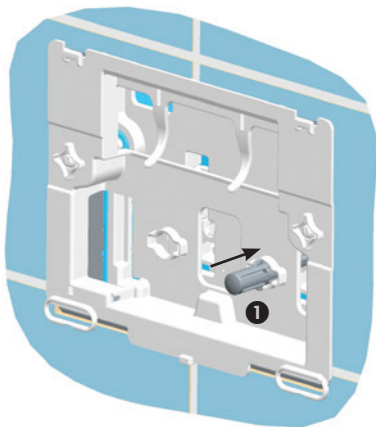
STEP 3

VERSION A

4



5

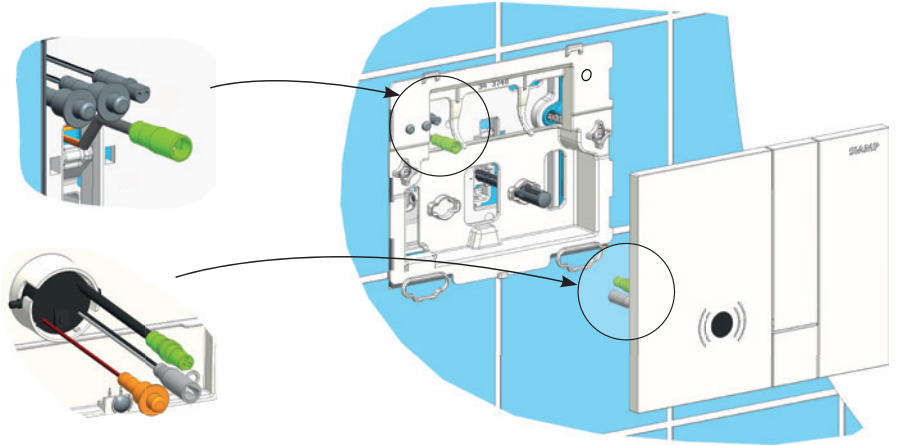


✓ OK

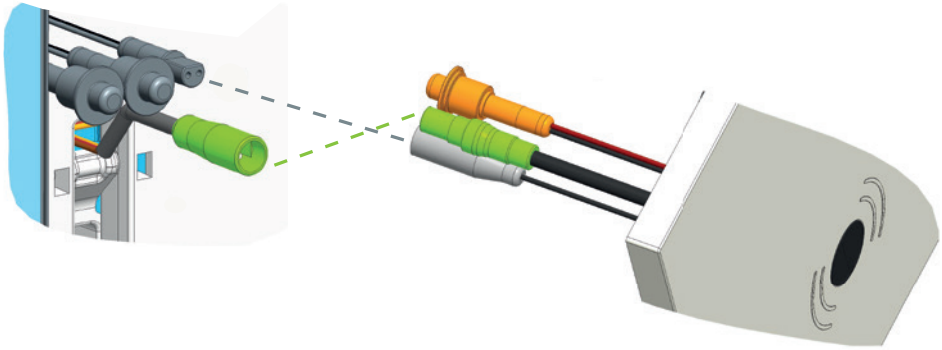
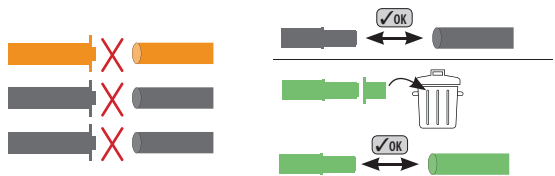
STEP 3



6



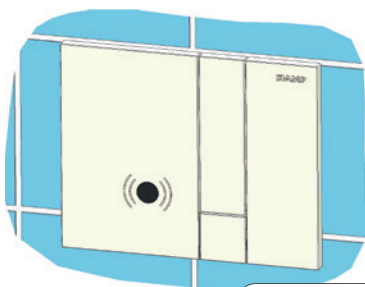
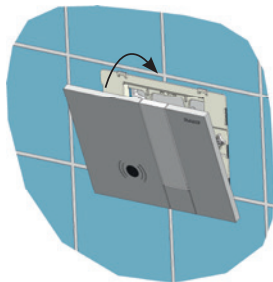
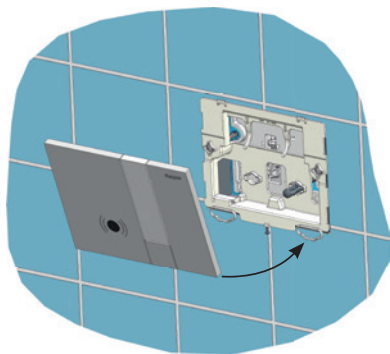
7



STEP 3

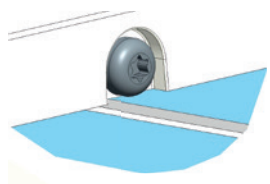
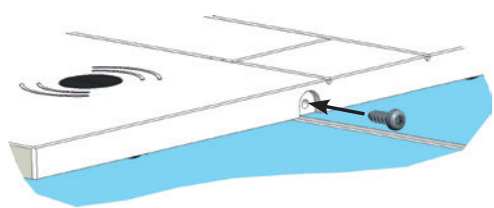


8



✓ OK

9

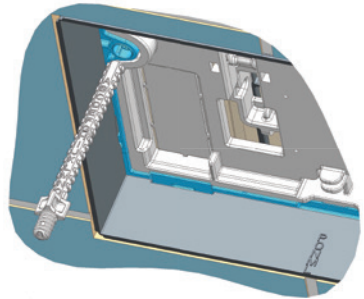
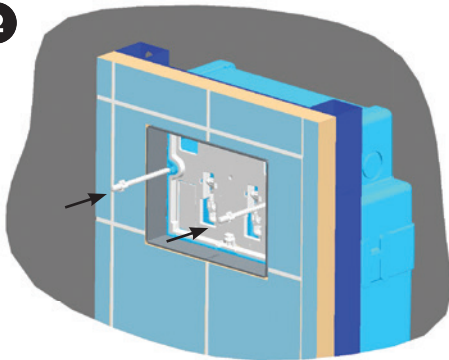


# VERSIONS B & C

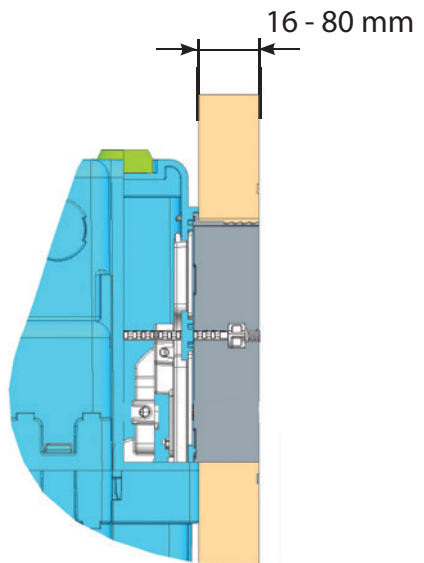
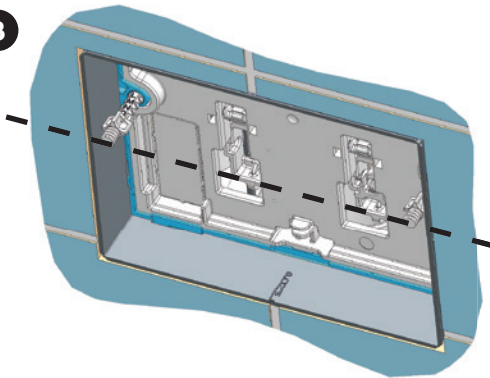
1



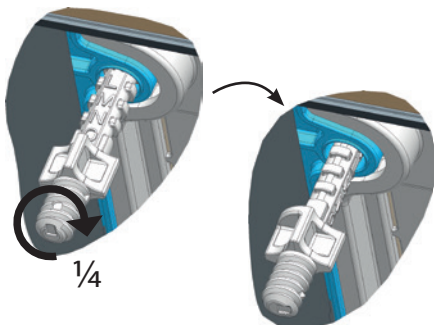
2



3



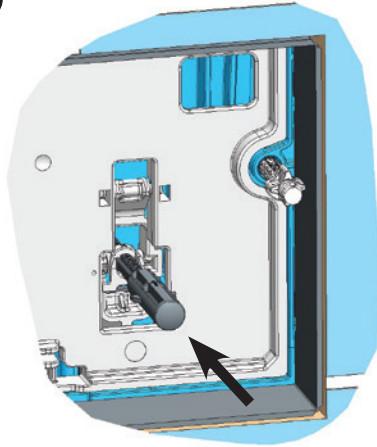
4



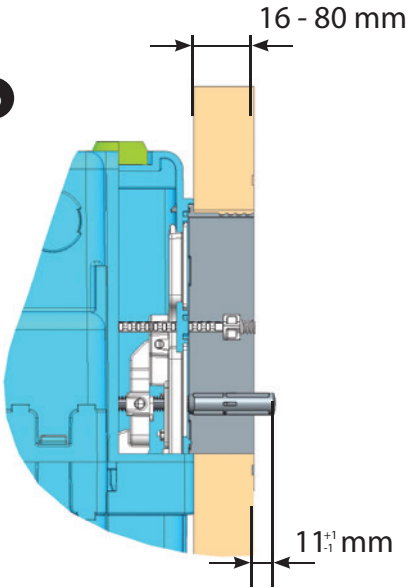
STEP 3

# VERSIONS B & C

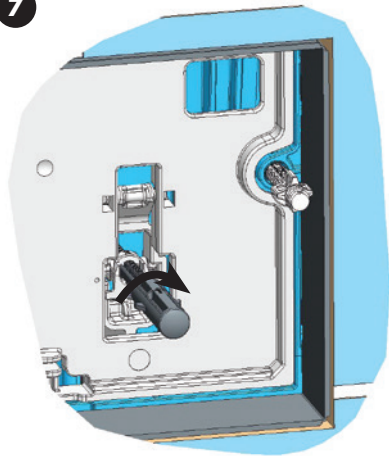
5



6

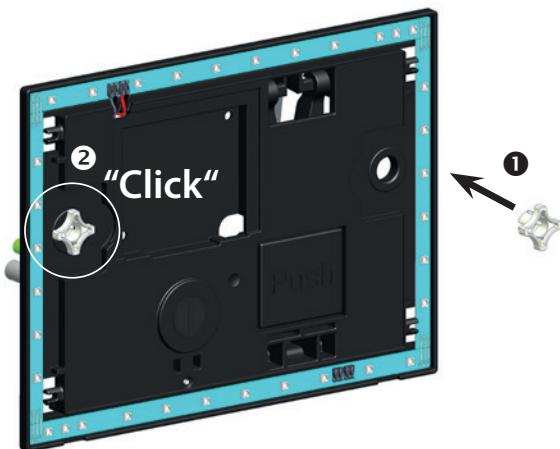


7

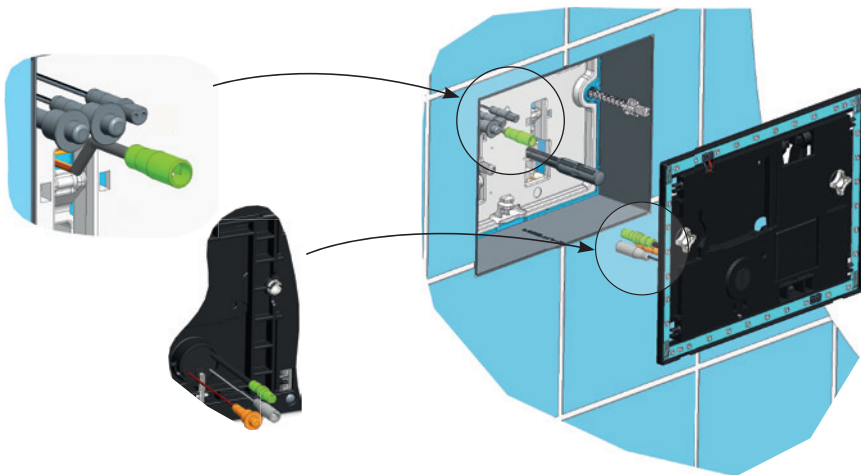


STEP 3

1

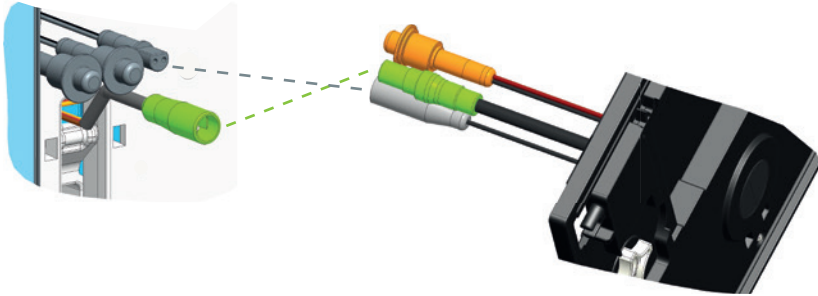
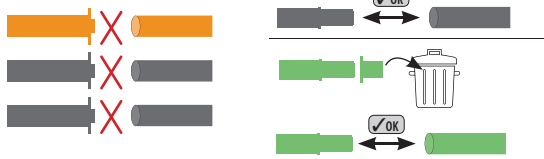


2

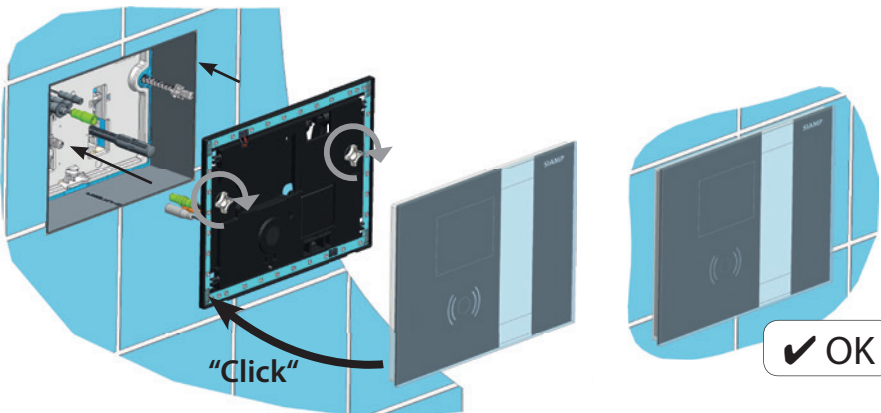
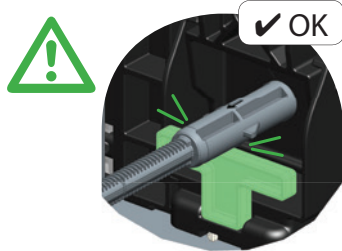


# VERSION B

3

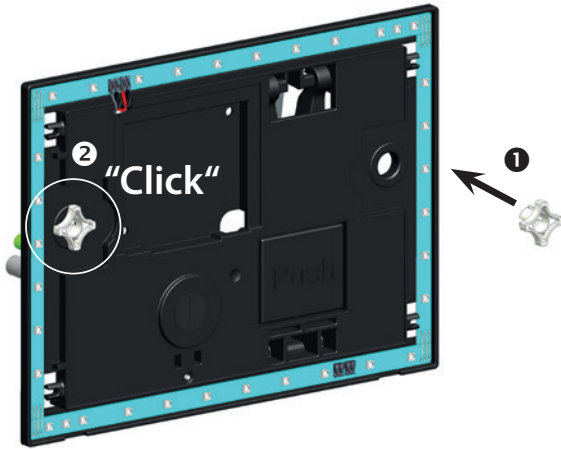


4

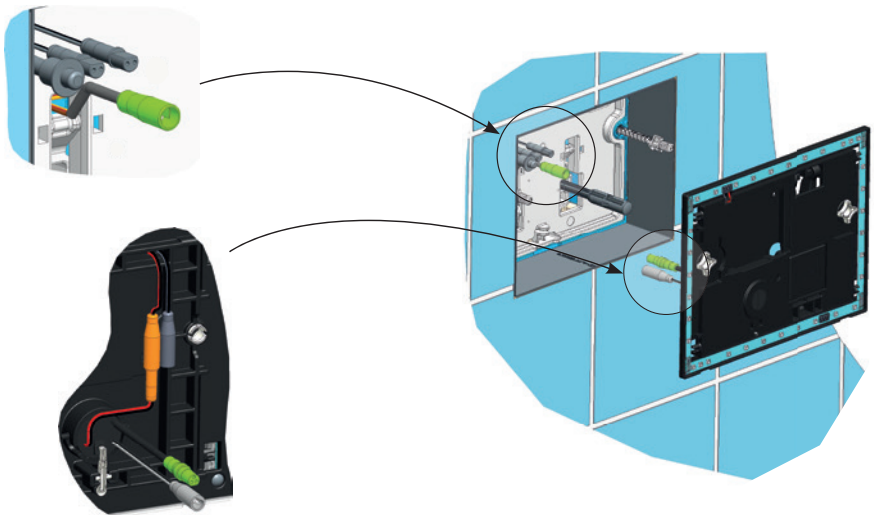


STEP 3 & 4

1

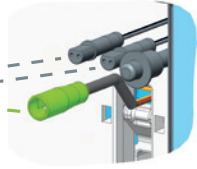
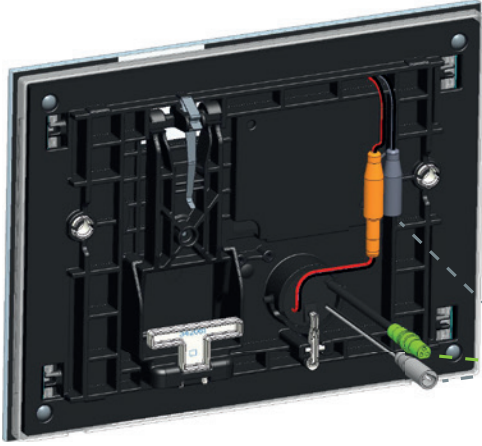
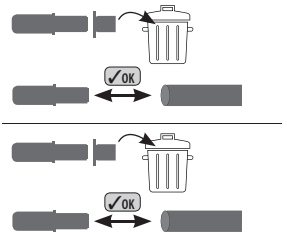
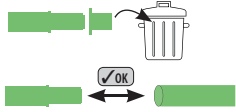


2

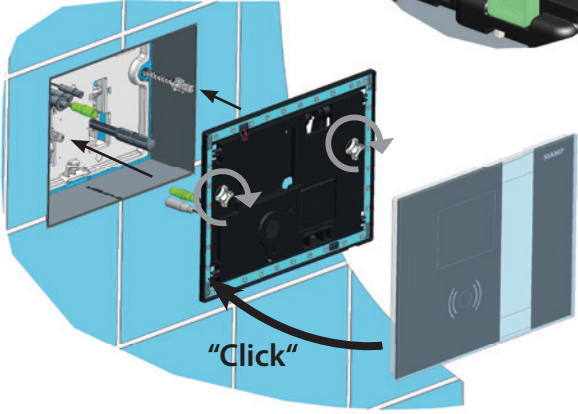
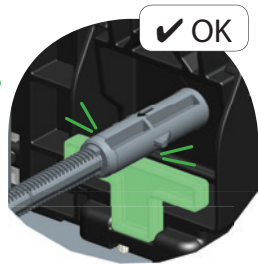


# VERSION C

3



4



STEP 3 & 4

TEST

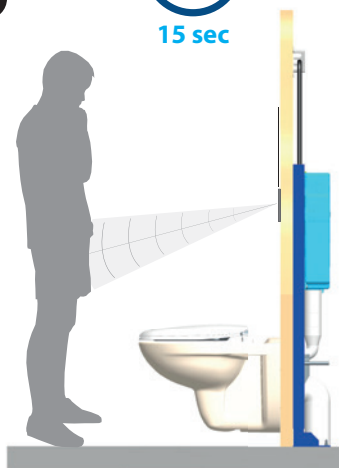


ON

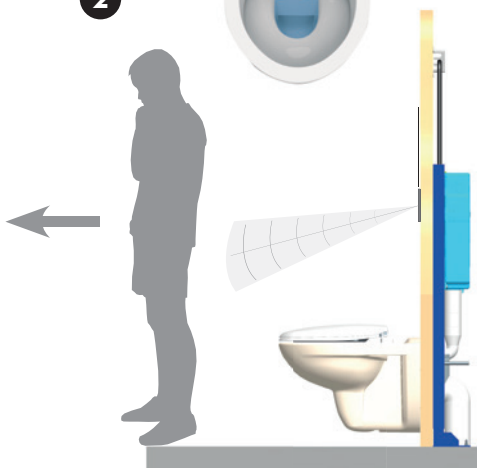
1



15 sec



2



# SIAMP

Monaco

4, quai Antoine 1<sup>er</sup> / B.P. 219  
MC 98007 MONACO Cedex

Tél. : +377 93 15 53 75  
Fax : +377 92 05 71 04

contact@siamp.com  
www.siamp.com

10 0033 37

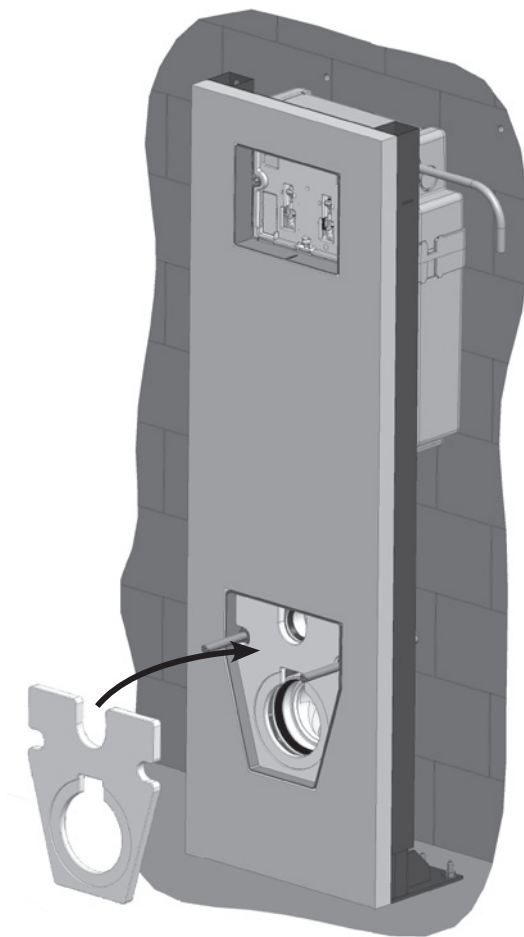
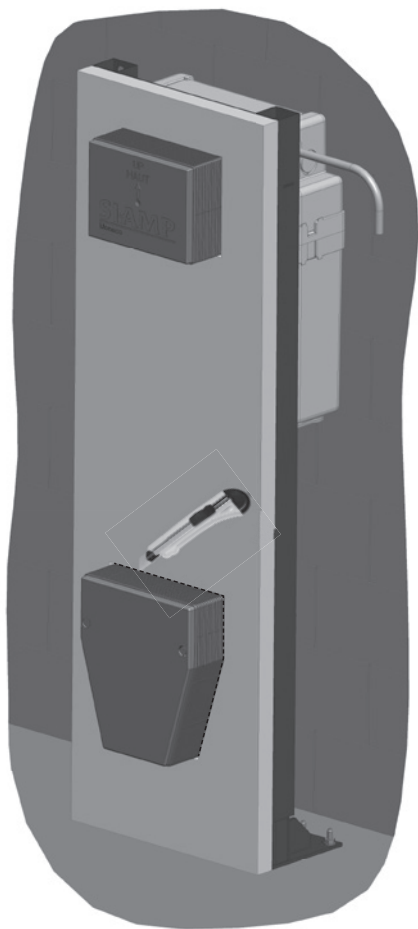


## Installation

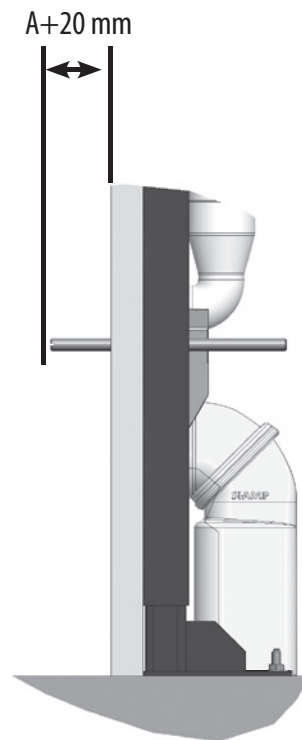
### CUVETTE / BOWL



# PREPARATION



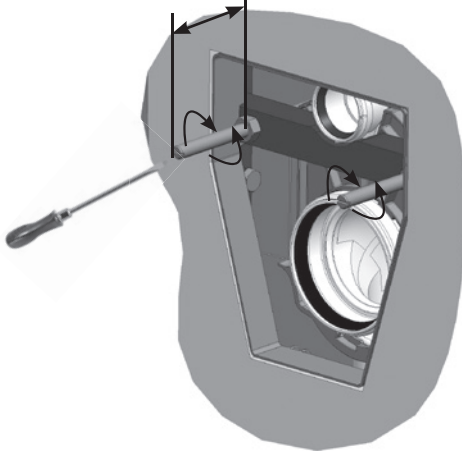
# PRISE DE CÔTE / MEASUREMENT



# RÉGLAGE TIGES FILETÉES / *THREADED RODS ADJUSTMENT*

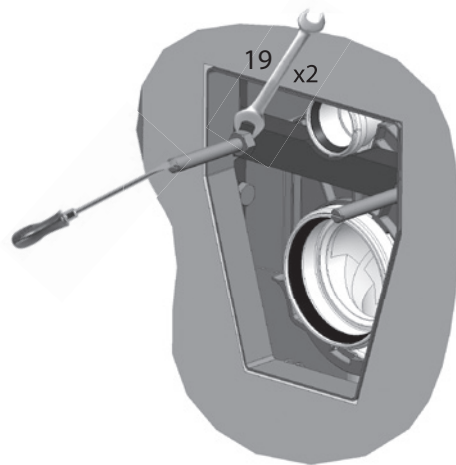
**1**

A+20 mm

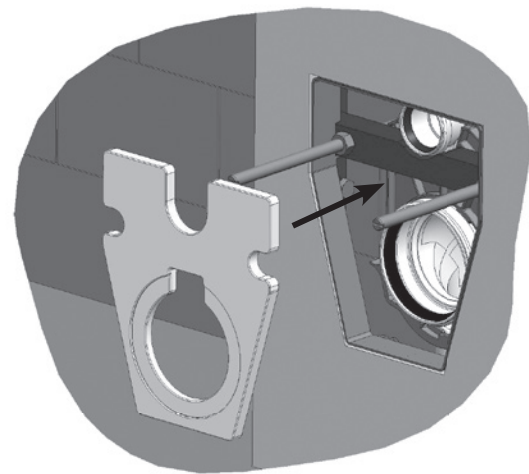


**2**

19 x2

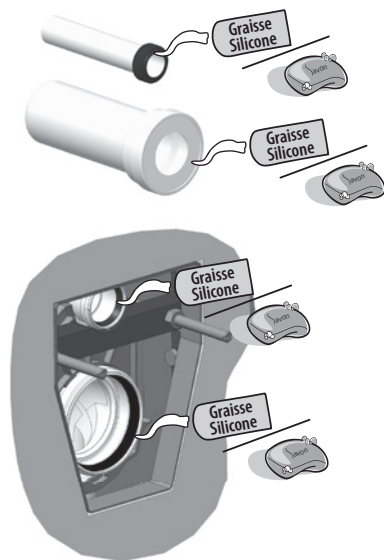


**3**

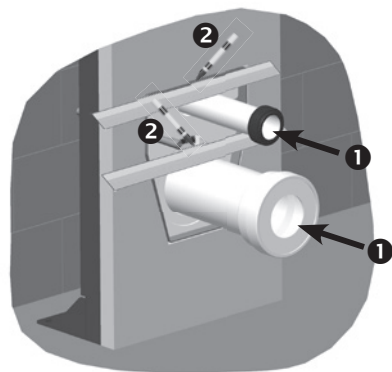


# DÉCOUPE MANCHONS / SLEEVES CUT

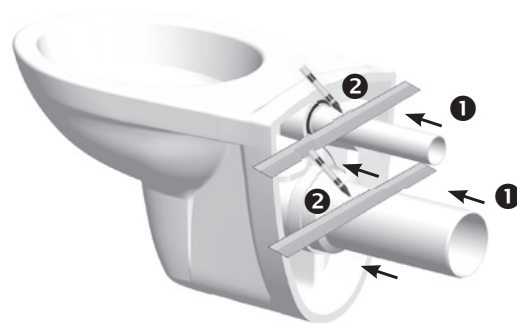
1



2

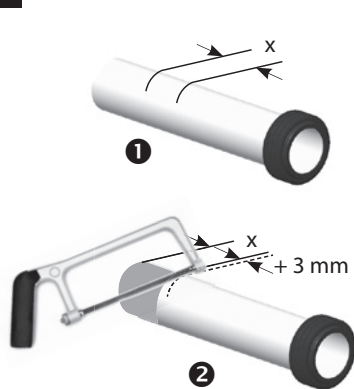


3

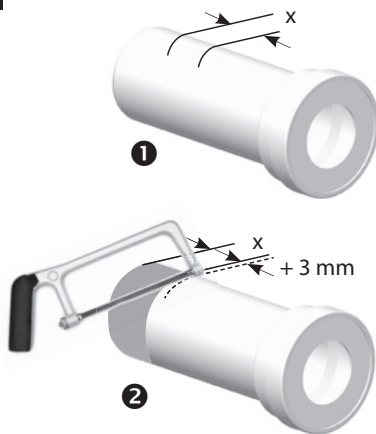


# DÉCOUPE MANCHONS / SLEEVES CUT

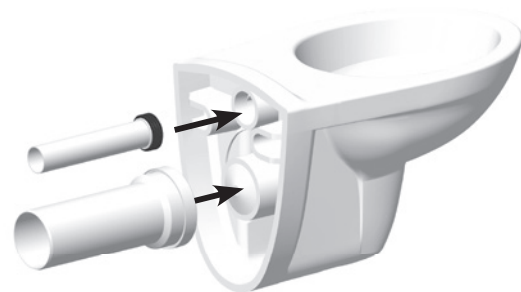
4



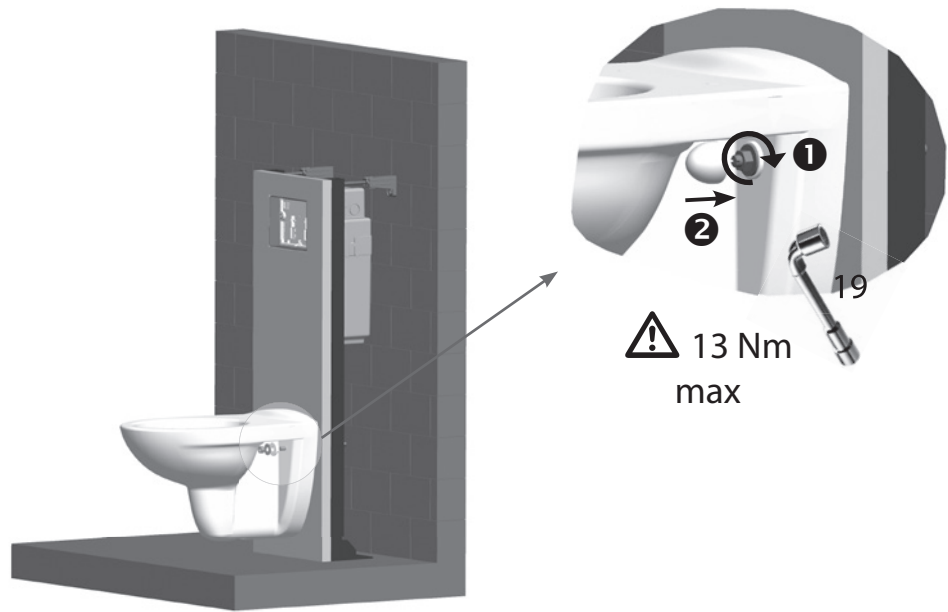
5



6



# FIXATION



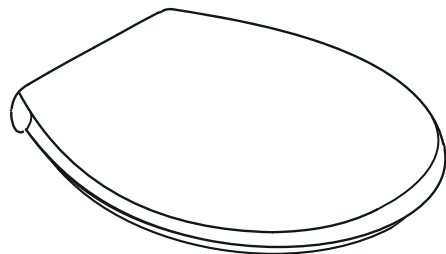


**SIAMP**

Monaco

4, quai Antoine 1er - BP 219 - MC 98007 MONACO Cedex  
Fax : +377 92 05 71 04 - [contact@siamp.com](mailto:contact@siamp.com) - [www.siamp.com](http://www.siamp.com)





## NOTICE D'INSTALLATION ABATTANT AVEC FERMETURE RALENTIE ET DECLIPSABLE

